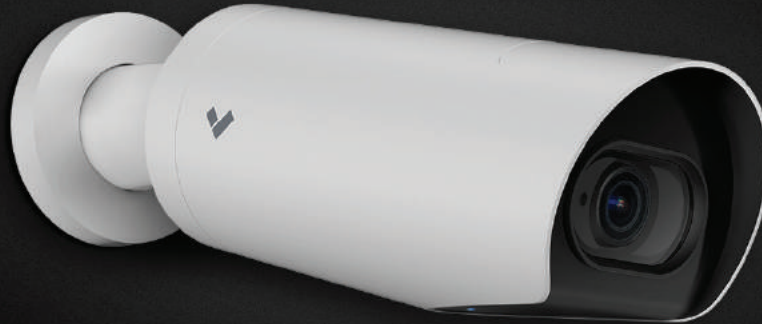




Bullet Series

Powerful video security built for the toughest environments



Overview

Verkada's Bullet Series delivers enterprise-grade security with leading edge-based processing and onboard storage in a new, bold form factor. Built to withstand the toughest environments, the Bullet Series features a sealed aluminum housing, ensuring cameras stay protected with an IK10 vandal resistance and IP67 waterproof rating.

With powerful long range IR sensors, image resolutions up to 4K and 3X optical zoom, Verkada bullet cameras deliver stunning video quality day or night, even in the most challenging indoor and outdoor environments.

All cameras in the Bullet Series are part of Verkada's line of hybrid cloud cameras and work out-of-the-box without any additional downloads or configurations. With standard features like end-to-end encryption, onboard storage, and advanced motion-based insights, organizations are able to quickly scale their coverage and increase situational awareness across any number of locations.

The Bullet Series' powerful processing delivers advanced computer vision features including Verkada's edge-based People and Vehicle Analytics. Bringing speed and efficiency to investigations, footage is processed directly on the camera, meaning results are nearly instant and always accessible.

Industry-Leading 10-Year Product Warranty

All Verkada hardware purchases are backed by our 10-year limited warranty. For more information, visit verkada.com/support/terms-of-sale.

Key Features

- Flexible mounting for any indoor or outdoor environment
- Highly durable with an IK10 rating
- Waterproof IP67-rated aluminum housing with hermetically sealed lens assembly
- High-resolution image quality up to ultra-HD 4K
- Long-range IR illuminators for optimal nighttime visibility
- Edge-based processing for motion, People, and Vehicle Analytics
- Low-bandwidth impact, only using 20-50 kbps per camera at rest
- Up to 365 days of onboard storage



Verkada's Hybrid Cloud Architecture



No NVR or DVRs

Industrial-grade solid state storage saves up to 365 days of continuous video

Easy to Scale

Bandwidth friendly and supports thousands of cameras across unlimited locations

Centralized Management

Modern platform enables secure access on any device from anywhere in the world

The reliability of on-camera solid-state storage, with the accessibility of the cloud

Simple to Install

- No NVRs, DVRs, or servers—just a PoE connection
- Cameras come online and configure in minutes
- No added software or complexities like port forwarding

Easy to Use

- Centralized management for seamless access anywhere
- No training required to access footage and features
- Find, download, and share footage from any device

Advantages of Cloud-Managed Solution

- Secure remote access on any device anywhere
- Real-time alerts if cameras fall offline
- SAML-based integration with single sign-on (SSO) solutions
- Continuous updates with new AI features
- Instantly share live footage via SMS and email
- Live, proactive alerting based on custom triggers

Ready For Scale

- Bandwidth-friendly, using 20-50 kbps per camera
- Scale to thousands of cameras across all locations
- No added equipment needed to support additional cameras

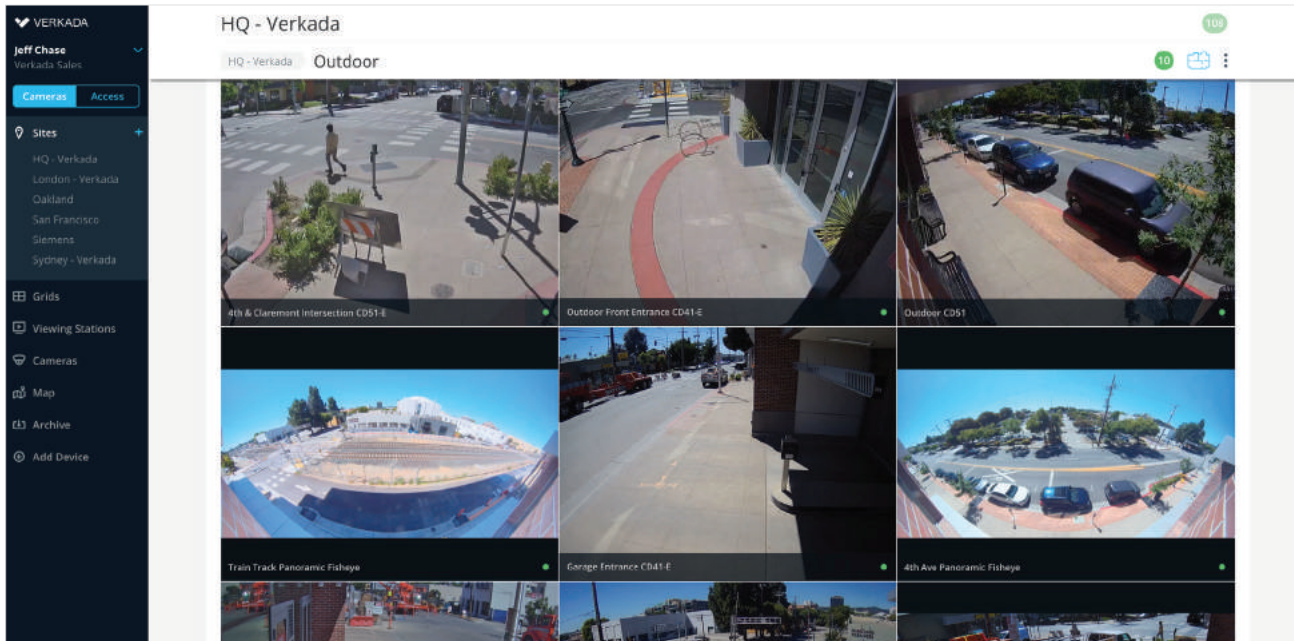
No Hidden Costs

- Hardware includes an industry-leading 10-year warranty
- Automatic firmware updates keep systems secure
- New features and enhancements are added at no additional costs



Command Platform Overview

All-in-one cloud-based management software for Verkada security cameras



Command, Verkada's cloud-based management platform, is designed to deliver simple access and management for all cameras and users across every site from virtually anywhere in the world. From Command, users can set up new cameras, create new sites, manage settings, access live and archived footage, manage users, and access the advanced features powered by Verkada's edge-based analytics.

Security & Permissions

- SAML/OAuth support for single sign-on
- 2-factor authentication
- User permissions can be controlled at camera, site and organization levels

Remote Access

- Access from any device (desktops, smartphones, tablets)
- Native apps for iOS and Android, and Verkada's VX51 Viewing Station

Archiving and Sharing

- Unlimited cloud archiving
- Easily export any footage in a shareable MP4 format
- Create and share Live Links with first responders

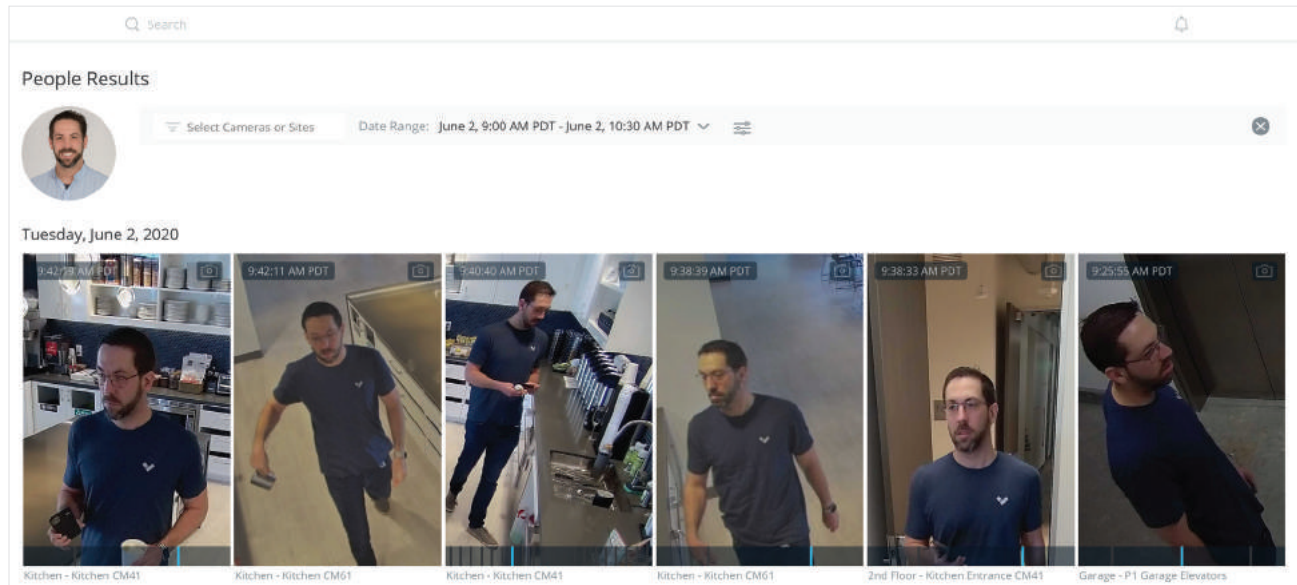
Powerful Edge-Based Analytics

- Search footage by date, time, and motion
- Access People and Vehicle Analytics to simplify investigations



People Analytics

Simplify and speed up investigations with intelligent people and face detection



People Analytics combines intelligent edge-based video processing with computer vision in the cloud to give users high-quality images of all individuals identified in the scene. With Verkada's centralized management platform, customers can filter people by various attributes, including date, time, appearance, clothing color, backpack detection, and facial matches.

Bring Intelligence to Investigations

Face Search

- Quickly search for matching people by selecting an existing face from your organization or by uploading an image

Person History

- Browse through high-resolution snapshots of people detected in frame
- Save snapshots or easily access associated full-res video
- Search for matched people across your entire organization with cross-camera search.

Attribute Filters

- Filter based on a range of attributes, including clothing color, gender appearance, and facial matches.

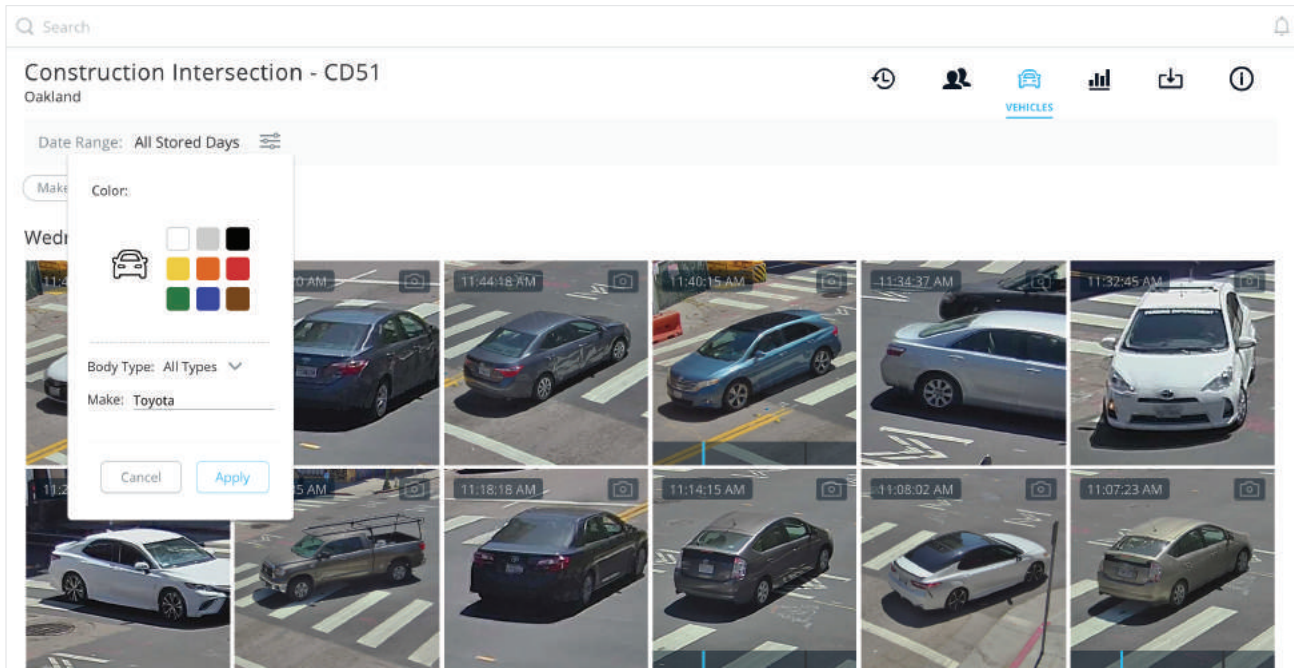
Person of Interest Notifications

- Set up proactive SMS/email notifications for alerting when a matching face is detected by a camera
- Create a person of interest by using an uploaded image or an existing face from your organization



Vehicle Analytics

Quickly search and filter to find vehicles of interest



Vehicle Analytics is a powerful edge-based feature that gives users high-quality images of all vehicles identified in the scene. With Verkada's centralized management platform, customers can filter vehicles by date, time, vehicle make, color, and body type.

Find and Filter Vehicles with Ease

Vehicle History

- Browse through high-resolution snapshots of vehicles detected in frame
- Save snapshots or easily access associated full-res video

Vehicle Filters

- Filter based on a range of attributes, including vehicle color, make, and body type.

Cross-Camera Tracking

- Easily find similar vehicles of interest across all cameras deployed across all sites
- Create and export playback of multiple angles of a vehicle to quickly provide evidence



Verkada's Bullet Series Hardware

Tough, durable form factors delivering powerful security anywhere.



Built Tough

- IK10-rated CNC aluminum housing for unmatched precision and durability
- Waterproof IP67-rated hermetically sealed lens assembly

High-Capacity Storage

- Enterprise-grade solid-state drives provide up to 365 days of continuous recording
- Wide range of storage options to ensure your organization meets all compliance requirements

Uncompromised Image Quality

- High image resolution up to ultra-HD 4K
- Up to 3x optical zoom
- Long-range IR sensors for enhanced nighttime viewing
- Built-in shield to protect lens from obstruction

Powerful Onboard Processing

- The Bullet Series is powered by an Ambarella chipset, enabling super-fast processing of Verkada's edge-based video analytics



Bullet Series		
	 <p>CB51-E</p>	 <p>CB61-E</p>
Image Resolution	5MP (2688 x 1944)	4K (3840 x 2160)
Lens Type	3x Optical Zoom	
Image Sensor	1/2.8" Progressive CMOS	
Focal Length	f=2.8mm-8mm	
Iris	P-Iris	
Aperture	F1.3-F2.4	
Field of View	Horizontal: 41°-95° Vertical: 40°-59° Diagonal: 50°-105°	Horizontal: 42°-95° Vertical: 25°-48° Diagonal: 49°-100°
IR Range	30m / 98ft in low light	
Resistance Rating	IK10, IP67	
Dimensions	Ø: 81 L: 263mm with mountplate	
Operating Specs	Power: 12W (IEEE 802.3af PoE), 20W (IEEE 802.3at PoE) Temperature: -20°C - 50°C (14°F - 122°F), 802.3af / -40°C - 50°C (-40°F - 122°F), 802.3at Humidity: 90%	
Connectivity	10/100Mb RJ-45 Cable Connector for Network/PoE Connection	



Ordering Information | Bullet Series

Product Name	MP	WDR	Lens	Grade	IR	Onboard Retention	People/ Vehicle Analytics	Cost (MSRP)
CB51-30E-HW	5.0	✓	Zoom	Outdoor	✓	30 Days	✓	\$1,399
CB51-60E-HW	5.0	✓	Zoom	Outdoor	✓	60 Days	✓	\$1,799
CB51-90E-HW	5.0	✓	Zoom	Outdoor	✓	90 Days	✓	\$2,199
CB51-365E-HW	5.0	✓	Zoom	Outdoor	✓	365 Days	✓	\$3,599
CB61-30E-HW	8.0	✓	Zoom	Outdoor	✓	30 Days	✓	\$1,799
CB61-60E-HW	8.0	✓	Zoom	Outdoor	✓	60 Days	✓	\$2,699
CB61-90E-HW	8.0	✓	Zoom	Outdoor	✓	90 Days	✓	\$3,599

Ordering Information | Cloud License

Product Name	Years	Cost Per Camera (MSRP)
LIC-1Y	1 Year Camera License	\$199
LIC-3Y	3 Year Camera License	\$499
LIC-5Y	5 Year Camera License	\$799
LIC-10Y	10 Year Camera License	\$1,599

Ordering Information | Viewing Station

Product Name	Description	Cost (MSRP)
VX51	Viewing Station	\$1,999
LIC-VX-1Y	1 Year Viewing Station License	\$499
LIC-VX-3Y	3 Year Viewing Station License	\$1,299
LIC-VX-5Y	5 Year Viewing Station License	\$1,999
LIC-VX-10Y	10 Year Viewing Station License	\$3,999

