



SURECALL FLARE 3.0



Boosts 5G & 4G LTE



Multiple Devices



All Carriers



Double the Power



Easy-Install App

High Performance Cell Phone Signal Booster with Bluetooth App for Home and Office

Overview

Significantly eliminate dropped calls and boost 5G and 4G LTE cell signals in your home or small office with the SureCall Flare 3.0 cell phone signal booster. This new 5G compatible booster features a mobile app specially built to optimize performance and simplify set-up. Flare 3.0 automatically improves 5G and 4G LTE cellular connectivity for all North American carriers, including Verizon's 5G Nationwide network, AT&T, T-Mobile, Straight Talk, US cellular and many more.

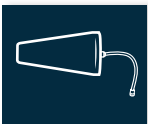
SureCall has developed a number of proprietary features to provide you significantly less dropped calls, faster downloads, easier streaming, longer battery life and greater satisfaction with your cell phone or cellular enabled device. SureCall's patented 2XP technology greatly extends your cellular connectivity range by DOUBLING your uplink power back to the cell tower to help you stay connected.

Flare 3.0 features SureCall's innovative Bluetooth mobile app that indicates signal strength readings in real-time providing installation feedback and troubleshooting. The app helps with two important aspects of any signal booster setup; proper aiming of the outside antenna and ensuring adequate separation between outside antenna and inside booster/antenna. Simply set up the Yagi antenna, run the coax cable into your home, and place the base unit in a central location where you need improved signal.

- Virtually eliminates dropped calls by boosting signals on all 5G and 4G phones, and is compatible with all North American cell carriers
- Amplifies the signal for multiple users and their devices in 2-4 rooms of a home, cabin or office, up to 3,500 sq ft
- 'SureCall' mobile app identifies your optimal setup by displaying real-time performance readings
- Extend your range of connectivity and speed up your data with SureCall's Patented 2XP technology
- Streamlined design features a combined high-power booster and indoor omni-directional antenna for easier installation
- Ensure constant connectivity even in the most challenging signal environments
- Designed, assembled and tested in the USA. Includes industry best 3-year warranty and lifetime 100% US-based tech support

Package Contents

The Flare 3.0 includes the Flare 3.0 booster with integrated indoor antenna, power supply, coax cable (50 ft), outdoor Yagi antenna, and quick setup guide.



Yagi, Directional



RG-6, 50 ft



Flare 3.0 Booster



Power Supply



The easy-to-install Flare 3.0 booster is supported by SureCall's innovative mobile app to simplify setup and optimize performance

Specifications

Uplink Frequency Ranges (MHz):	698-716 / 776-787 / 824-849 / 1710-1755 / 1850-1915
Downlink Frequency Ranges (MHz):	728-746 / 746-757 / 869-894 / 1930-1995 / 2110-2155
Max Gain:	72 dB
Impedance:	75Ω in / 50Ω out
Max Uplink Power:	26.0 dBm
Cable:	RG-6
RF Connector:	F Female

► Patent No. US 8,867,572 B1; US 9,100,839 B2



48346 Milmont Dr.
Fremont, CA 94538
www.SureCall.com

info@surecall.com
888-365-6283

Download the free 'SureCall' app in the Google Play or Apple App Store once you receive your Flare 3.0 booster kit.



SureCall Flare 3.0

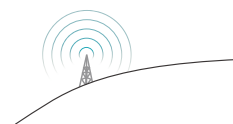
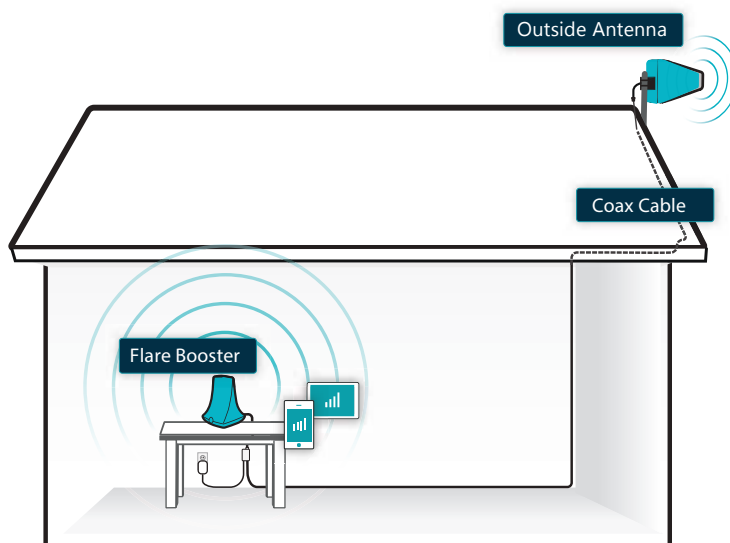
Boosts 5G/4G LTE cell signals for all devices, including hotspots, for fewer dropped calls, better battery life, higher audio quality, faster data speeds and improved streaming in low signal areas.

Specification

Model No.	SC-Flare3US
Uplink Frequency Range (MHz):	698–716 / 776–787 / 824-849 / 1850–1915 / 1710–1755
Downlink Frequency Range (MHz):	728–746 / 746–757 / 869–894 / 1930–1995 / 2110–2155
Supported Standards:	4G / LTE / 5G cellular standards
Impedance:	75Ω donor port / 50Ω server port
Maximum Gain:	72 dB
Noise Figure:	7 dB
VSWR:	≤ 2.0
Max Uplink Power:	26.0 dBm
Maximum Output Power:	1 Watt EIRP
Cable:	RG-6 (50 ft)
RF Connectors:	Donor port: F Female, Server port: Integral
AC Power Transmitter:	Input: AC 110 – 240 V, 60 Hz ; Output: DC 5V / 3A
Power Consumption:	<12W
Dimensions:	5.125 × 7.25 × 5.625 inches
Weight:	1.8125 lbs
Certifications:	(US): FCC ID: RSNFLARE-3 (Flare 3.0); BLE Module FCC ID: XPYNINAB1

Specifications are subject to change. Specifications contained within apply only to products meeting the latest FCC Certification Guidelines.

Installation Example:



NOTE: Performance is limited by your outside signal. If signal is weak where the outside antenna is installed, indoor coverage will be limited.

Mounting the outside antenna where the signal is the strongest yields the best possible results.

Using the the SureCall mobile app to wirelessly connect to your booster, you can identify the best location and angle for your antenna by reading signal strength in real time.