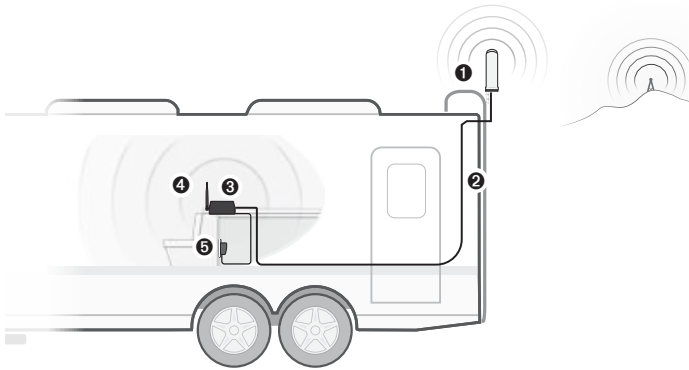




Quick Setup Guide

SureCall Fusion2Go XR RV

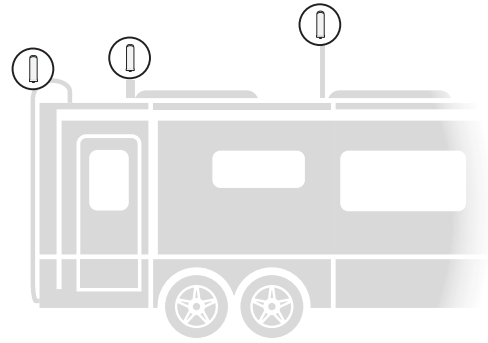


- 1** Outside antenna
- 2** Coax Cable
- 3** Booster
- 4** Interior antenna
- 5** AC Power supply

BEFORE YOU BEGIN

Select a location for the outside antenna that is above the roofline. The outside antenna is omni-directional, which receives and sends signals in a 360° radius. For maximum performance, mount the antenna at the highest possible location outside the vehicle and in an upright position. This can be accomplished by utilizing the included mounting hardware and positioning the antenna above the roof line and at least a 12-inch radius clear of obstructions and other radiating elements.

NOTE: The outside antenna must not be collocated or operating with any other antenna or booster. Maximum height restriction is 31 feet 9 inches (10 meters) above ground.



A "soft installation" should first be performed by running the cable through an open window. After completing the installation steps and successful operation is verified, proceed with permanent installation.



Quickly optimize your antenna separation with the SureCall mobile app that is available in the Google Play or Apple's App Store.

Have Questions?

We have answers! Reach out to our US-based support team:

- Call:** 1-888-365-6283
- Email:** support@surecall.com
- Visit:** www.surecall.com

Industry-Best Three-Year Warranty

Thank you for your SureCall purchase. Please take the time to register your new product at www.surecall.com/activate

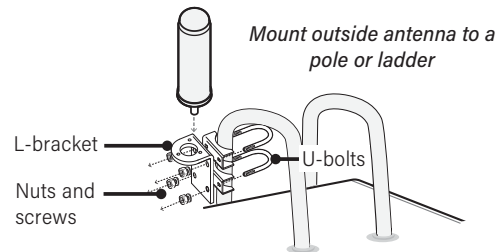
SureCall warrants its products for three years from the date of purchase against defects in workmanship and/or materials.

Products returned by customers must be in their original, un-modified condition, shipped at the customer's expense in the original or protective packaging with proof-of-purchase documentation enclosed and a Return Merchandise Authorization (RMA) number printed clearly on the outside of the shipping container. RMA numbers are obtained by contacting Customer Support.

This warranty does not apply to any product determined by SureCall to have been subjected to misuse, abuse, neglect, or mishandling that alters or damages the product's physical or electronic properties.

For complete warranty text, including limitations and liability, see the Fusion2Go XR RV user manual, available online at www.surecall.com.

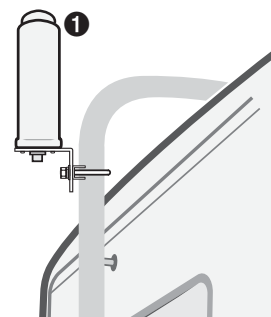
1. INSTALL OUTSIDE ANTENNA



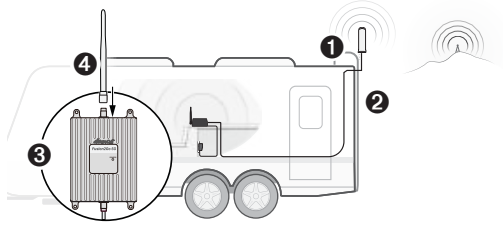
Mount the antenna to a pole or ladder. Position it upright position such that the entire length of the antenna is above the roof line of the RV and other metal obstructions.

Assemble the L-Bracket with U-bolts, brackets, nuts and washers and secure to mast or pole as shown in the illustration.

Secure antenna to the horizontal plate of L-Bracket using screws.



2. INSTALL BOOSTER AND INSIDE ANTENNA

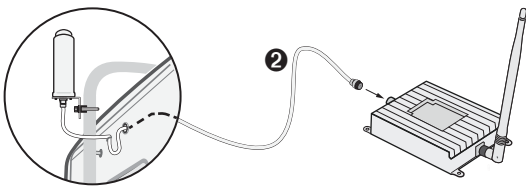


Identify a location for the booster that is near the center of where signal is needed. The location should be free from excessive heat, direct sunlight, or moisture, as well as provide proper ventilation.

Mount the booster within a cabinet or on a side panel close to a power source. Connect the inside whip antenna to the port on the side of the booster labeled "INSIDE".

Note that the inside antenna sends signals in a 360 degree radius and should be positioned vertically.

3. PLACE BOOSTER AND CABLES

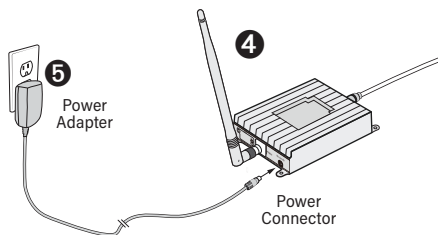


It is recommended to first perform a "soft" installation by routing the outside antenna cable through an open window. After completing the "soft" installation and verifying successful operation, proceed with permanent cable installation below.

Route the cable from the outside antenna to the port on the booster labeled "OUTSIDE". Make sure that all connections are secure before powering on. Finish permanent cable installation by securing any loose cables inside the vehicle.

NOTE: If you choose to drill a hole for cable entry, do so on the side of the vehicle, away from other cables or pipes. Use a rubber gasket (sold separately) to protect the cable and your vehicle surface. Form a drip loop before entry and create a moisture barrier using a permanent sealant.

4. CONNECT TO POWER



Connect the AC power adapter to the signal booster and plug it into a power outlet. The Power LED will light, indicating that the signal booster is ready for use.

Place a call in a location you have previously experienced poor signal and confirm that your phone is receiving a boosted signal. Normal operation is indicated by Green LEDs (both flashing and solid). In the event Red LEDs appear, antenna adjustments may be needed.

⚠ WARNING: The booster is rated for 6-15V input voltage. DO NOT use the booster with a higher voltage power supply. This can damage the booster and/or cause personal injury.

Verify Your System is Working

Place a call in a location where you previously experienced poor cell service and confirm that your phone is receiving boosted signal. To improve performance, antenna adjustments may be needed. Review the following potential causes:

(1) Verify the two antennas have sufficient separation/isolation from the other and (2) at least 12 inches from other radiating elements.

NOTE: Bars are not always a reliable measure of signal. The best way to confirm signal coverage is the ability to place and hold a call.

'POWER' LED

During initialization, the LED will briefly flash YELLOW/RED. This is part of normal operation. After initialization, normal operation is indicated by a GREEN LEDs. In the event RED LEDs appear, antenna adjustments may be needed.

LED State	Status	Indication
Solid GREEN	Normal	Normal
Solid RED	Alert – Oscillation detected	Indicates that oscillation has caused the booster to shut off. Antenna repositioning is needed. Verify that there is sufficient separation between the outside and inside antennas, as well as any potentially interfering objects or antennas.

Troubleshooting

Problem: Signal booster has no power

Connect the power supply to an alternate power source. Verify that the power source is not controlled by a switch that has removed power from the outlet.

If the POWER LED on the signal booster remains OFF, contact tech support at: 1-888-365-6283 or support@surecall.com

Problem: Following installation, signal coverage has not improved

(1) Verify that all cable connections are tightly fitted. (2) Try further separating the antennas. (3) Verify that there is usable signal where the outside antenna is placed.

Specifications

Uplink Frequency (MHz):	698-716 / 776-787 / 824-849 / 1850-1915 / 1710-1755
Downlink Frequency (MHz):	728-746 / 746-757 / 869-894 / 1930-1995 / 2110-2155
Cellular bands	12 / 17 / 13 / 5 / 2 / 25 / 4
Supported Standards:	5G, 4G, LTE cellular standards
Maximum Gain:	50 dB
Input Impedance:	50 Ω
Gain Adjustment:	20 dB (Automatic)
Max Uplink Power:	29.0 dBm
Noise Figure:	≤ 6 dB
DC Power:	6-15V
VSWR:	≤ 2.0
Max Output Power:	1 Watt EIRP
Exterior Cable:	SC-240 / 40 ft
RF Connectors:	FME Male (both ends)
Power Consumption:	≤ 12W
Operation Temp:	-4° to +158° F
Certification:	FCC ID: RSN-FUSION2G05G Contains FCC ID: XPNYNAB1

This is a CONSUMER device

BEFORE USE, you **MUST REGISTER THIS DEVICE** with your wireless provider and have your provider's consent. Most wireless providers consent to the use of signal boosters. Some providers may not consent to the use of this device on their network. If you are unsure, contact your provider.

You **MUST** operate this device with approved antennas and cables as specified by the manufacturer. Antennas **MUST** be installed at least 20 cm (8 Inches) from any person. You **MUST** cease operating this device immediately if requested by the FCC or a licensed wireless service provider.

WARNING: E911 location information may not be provided or may be inaccurate for calls served by using this device.

Operation is subject to the following two conditions: (1) this device may not cause harmful interference, and (2) this device must accept any interference received, including interference that may cause undesired operation.

The outside antenna must not be collocated or operating with any other antenna or booster.