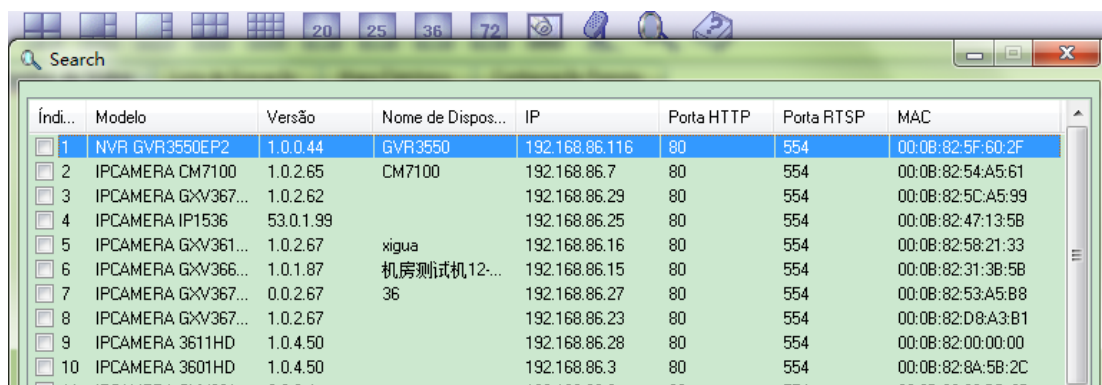


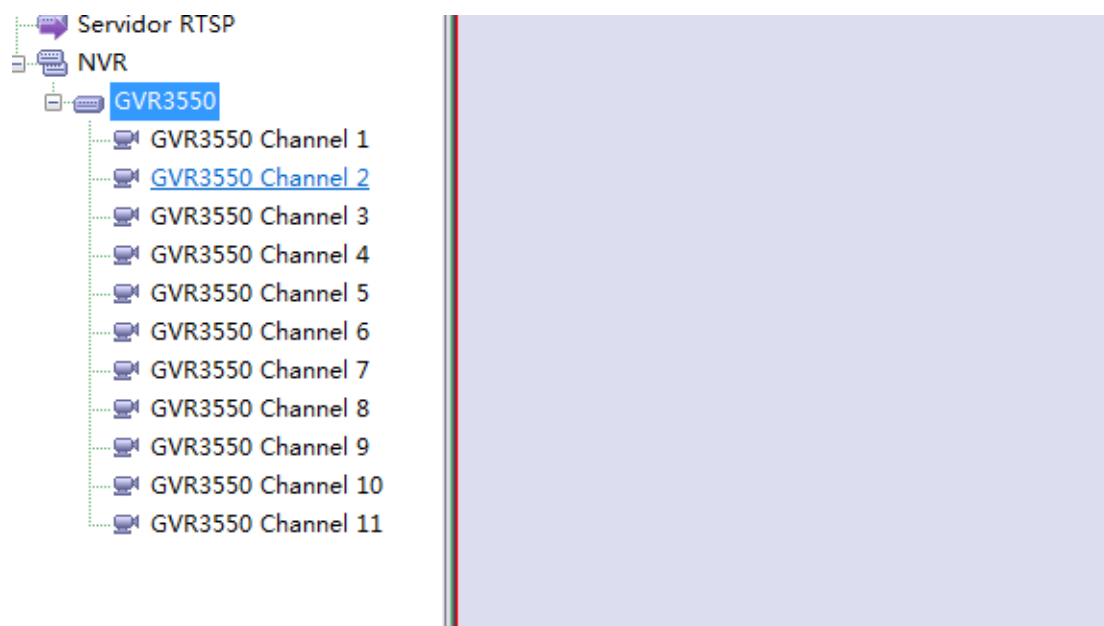
GSurf_Pro V2 Managing GVR3550

1. Search and Manually adding GVR3550 and obtaining channel information:

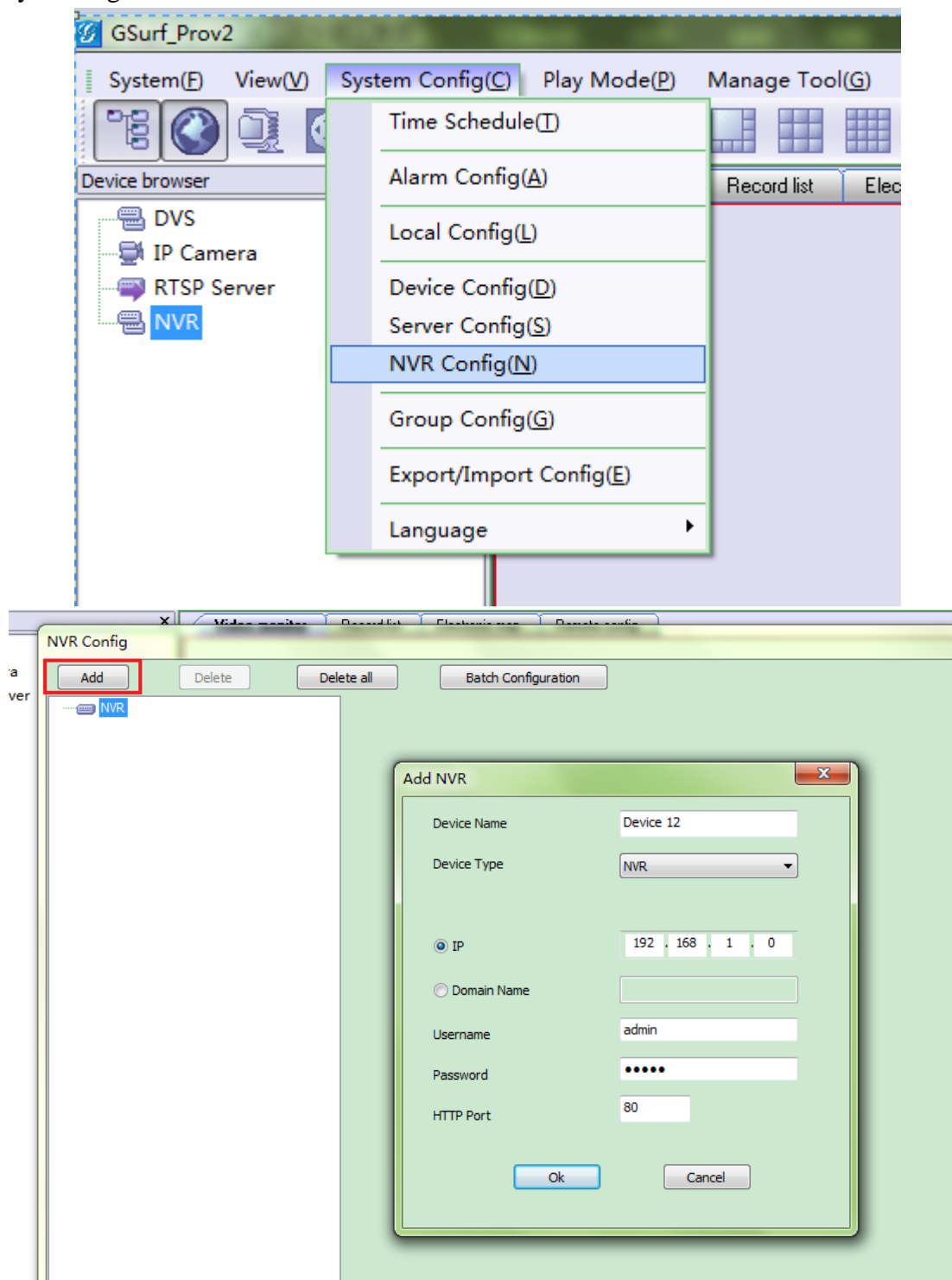


Índi...	Modelo	Versão	Nome de Dispos...	IP	Porta HTTP	Porta RTSP	MAC
1	NVR GVR3550EP2	1.0.0.44	GVR3550	192.168.86.116	80	554	00:0B:82:5F:60:2F
2	IPCAMERA CM7100	1.0.2.65	CM7100	192.168.86.7	80	554	00:0B:82:54:A5:61
3	IPCAMERA GXV367...	1.0.2.62		192.168.86.29	80	554	00:0B:82:5C:A5:99
4	IPCAMERA IP1536	53.0.1.99		192.168.86.25	80	554	00:0B:82:47:13:5B
5	IPCAMERA GXV361...	1.0.2.67	xigua	192.168.86.16	80	554	00:0B:82:58:21:33
6	IPCAMERA GXV366...	1.0.1.87	机房测试机12...	192.168.86.15	80	554	00:0B:82:31:3B:5B
7	IPCAMERA GXV367...	0.0.2.67	36	192.168.86.27	80	554	00:0B:82:53:A5:B8
8	IPCAMERA GXV367...	1.0.2.67		192.168.86.23	80	554	00:0B:82:D8:A3:B1
9	IPCAMERA 3611HD	1.0.4.50		192.168.86.28	80	554	00:0B:82:00:00:00
10	IPCAMERA 3601HD	1.0.4.50		192.168.86.3	80	554	00:0B:82:8A:5B:2C
11	IPCAMERA GXV361...	0.0.0.4		192.168.86.8	80	554	00:0B:82:60:80:2B

When GXV3550 added, channel information will be obtained automatically as shown below:

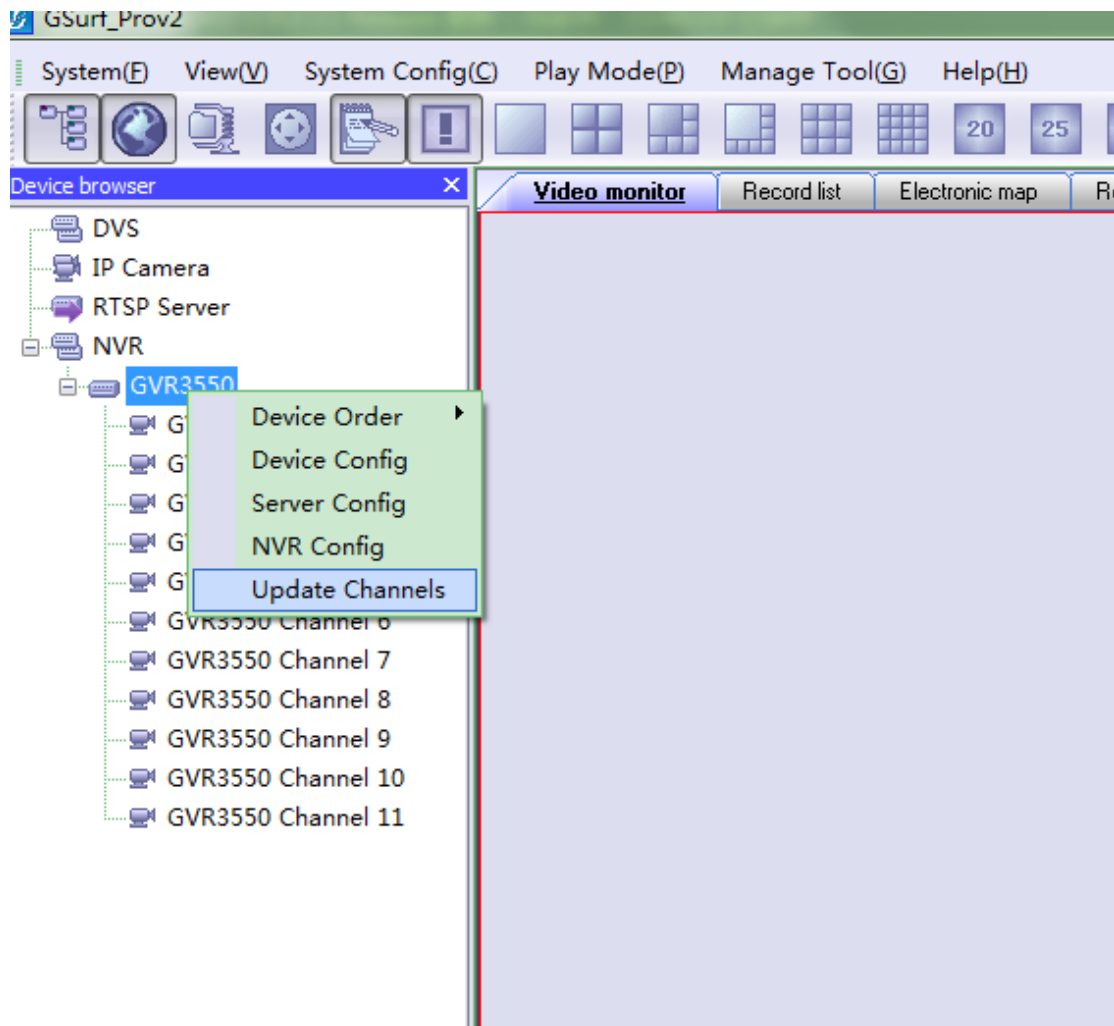


Manually Adding:



Channel and RTSP port information will be obtained only when correct parameters inputted.

2. Manually and automatically refresh (1 minute interval) channel information of GVR3550.

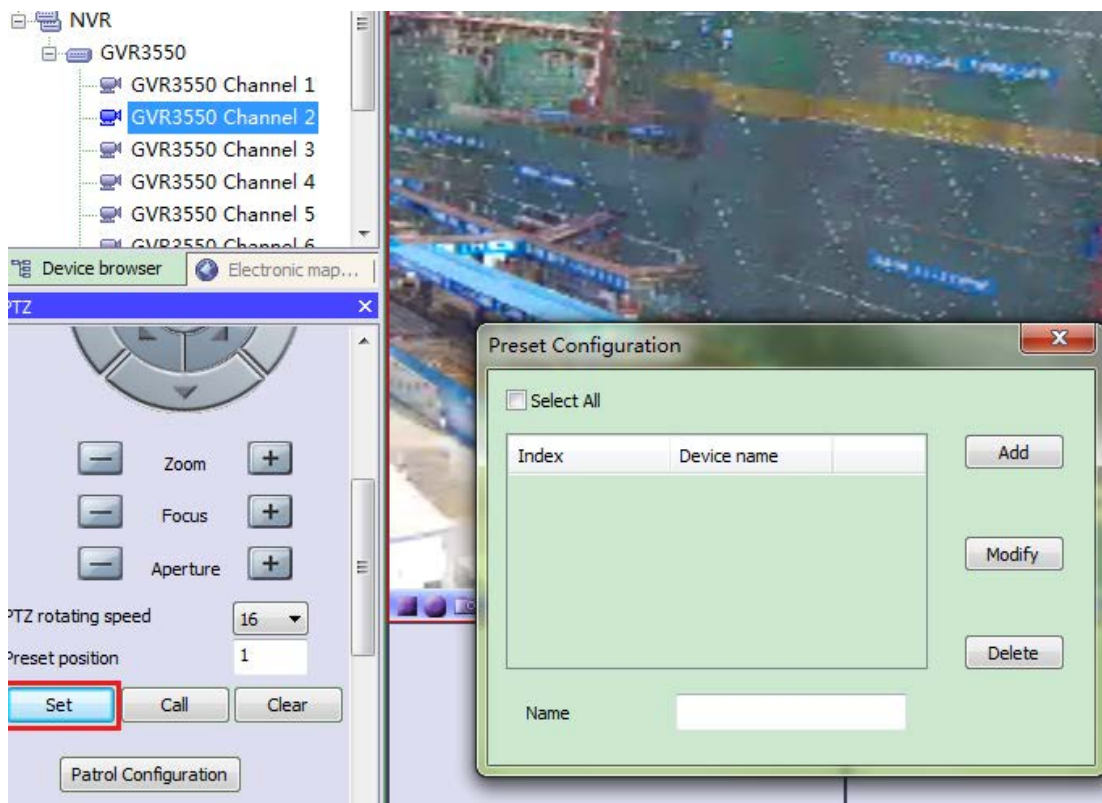


3. Channel video Live View operation similar to other device operation.

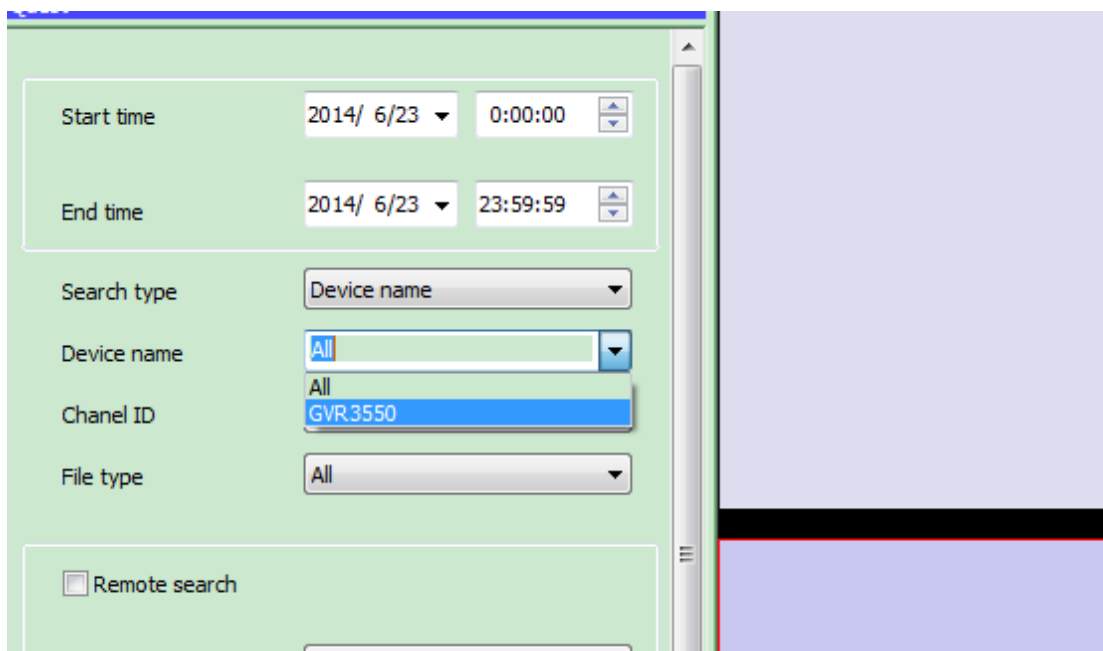
4. PTZ operation also similar to other device operation.

5. Obtain, Add, Delete and Revise the Preset Position.

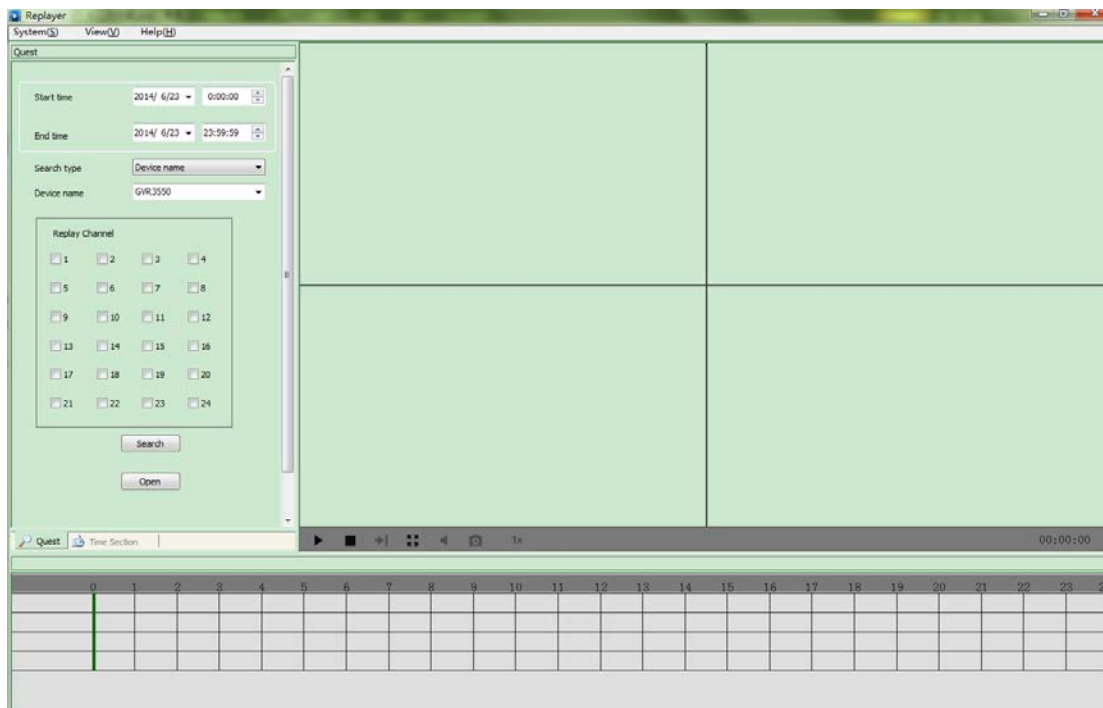
If the device is GVR3550, click “set” will pop-up configuration window of preset position, operating related button to Add, Revise, Delete the Preset Position, shown below:



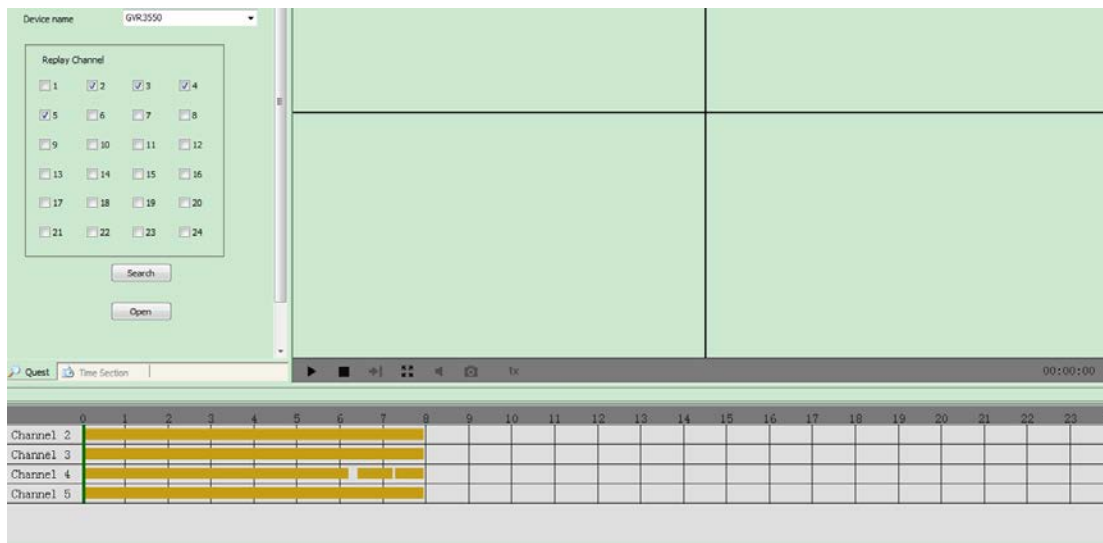
6. **Replay Tool added GVR3550 Channel Video Replay function, maximum will replay and display with four windows. When display in single window, Fast Forward, Slow Play, Frame Forward, Sound and Snapshot features will be available.**




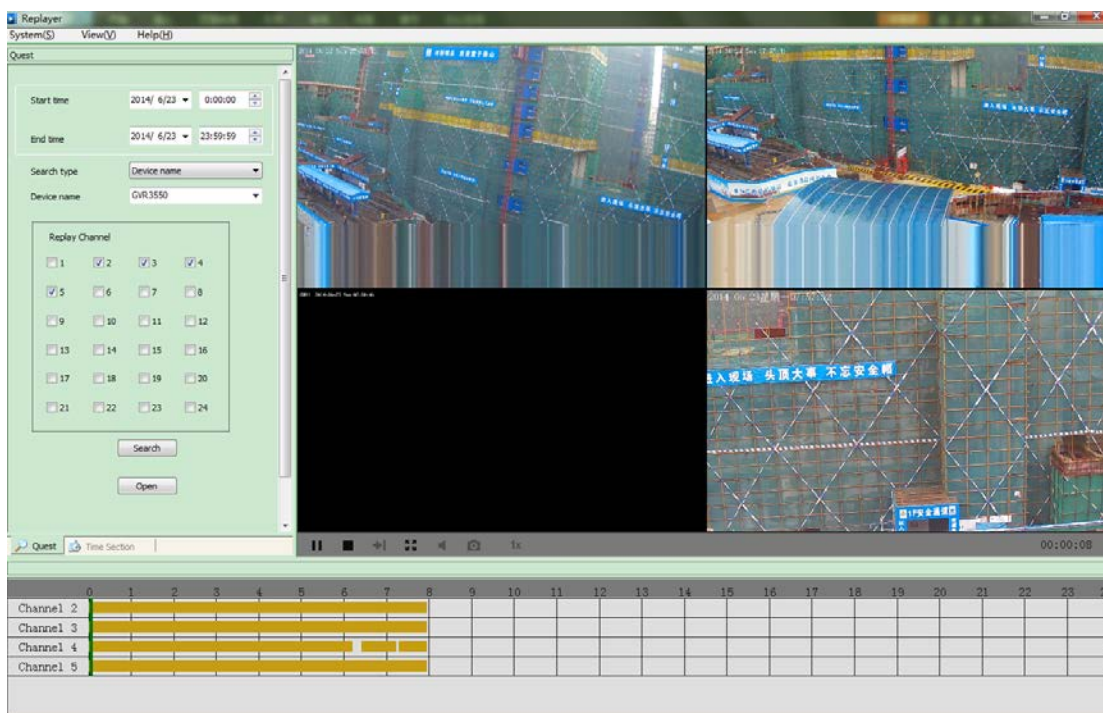
Following will be displayed when GVR3550 selected:



Select searched channels (maximum 4), following will be displayed:

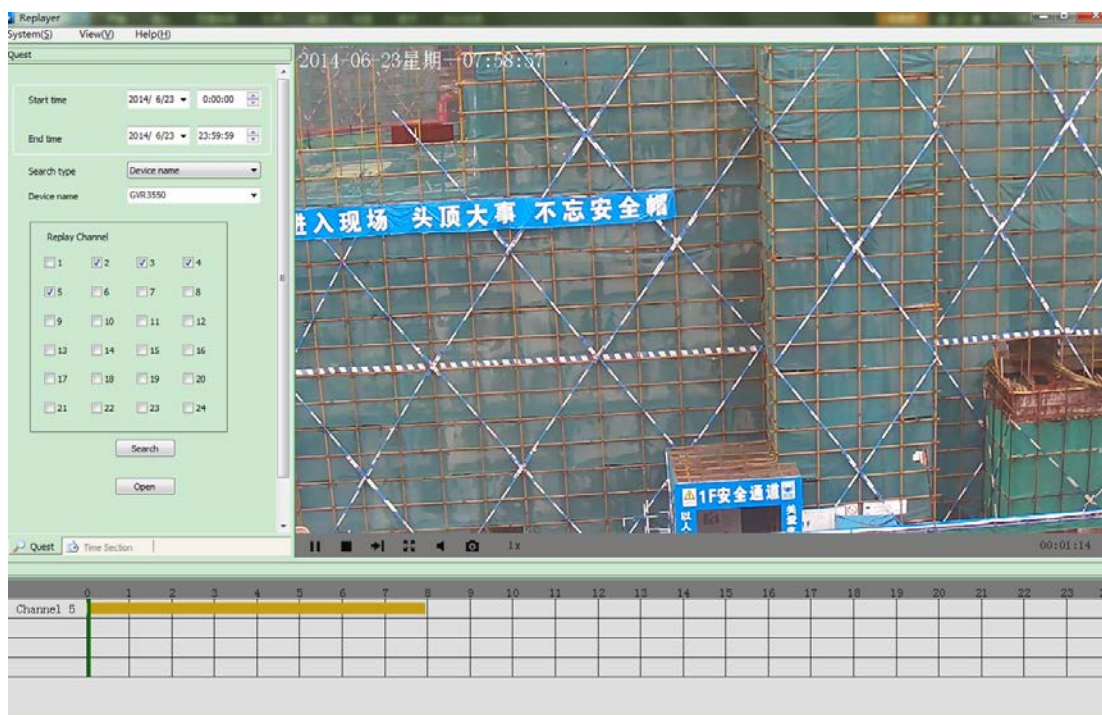


Click  button, will replay recorded video of all 4 channels

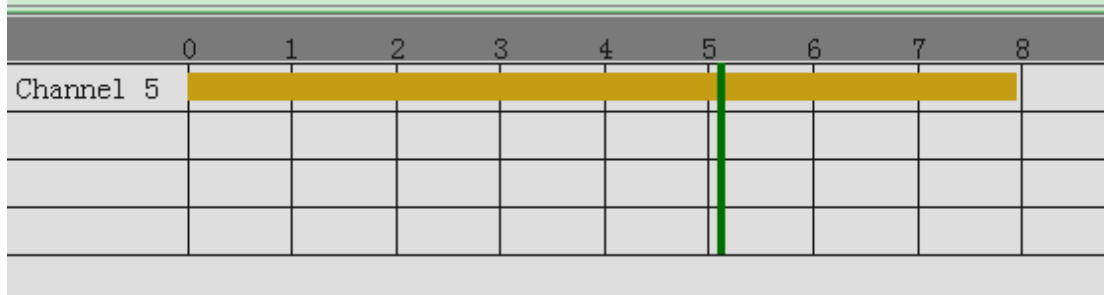
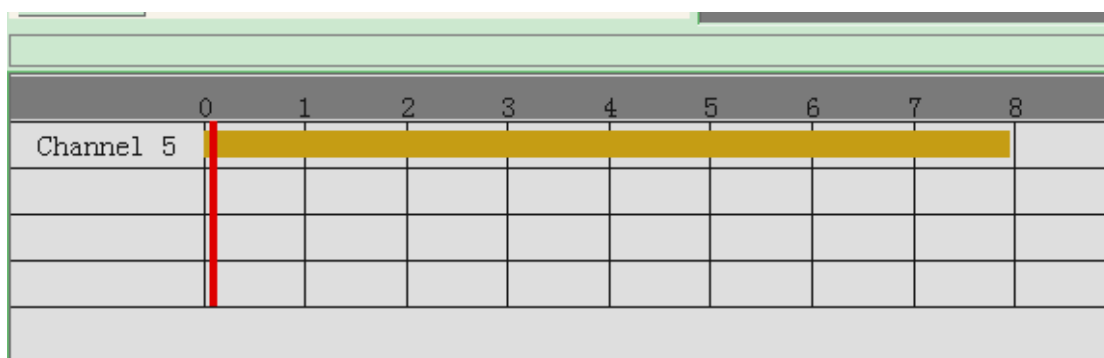
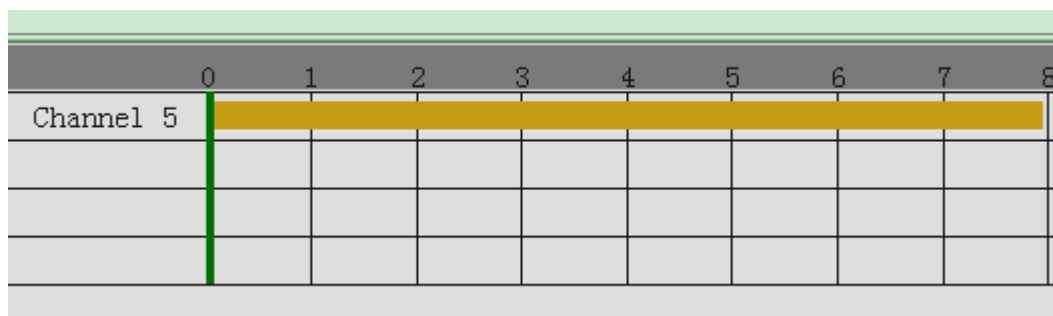


Click  button, will stop video replay of all 4 channels.

Double click the related video replay window will enlarge it to single window display, as shown below. When in single window replay, feature operation like: Fast Forward, Slow Replay, Frame Forward, Sound and Snapshot will be available.

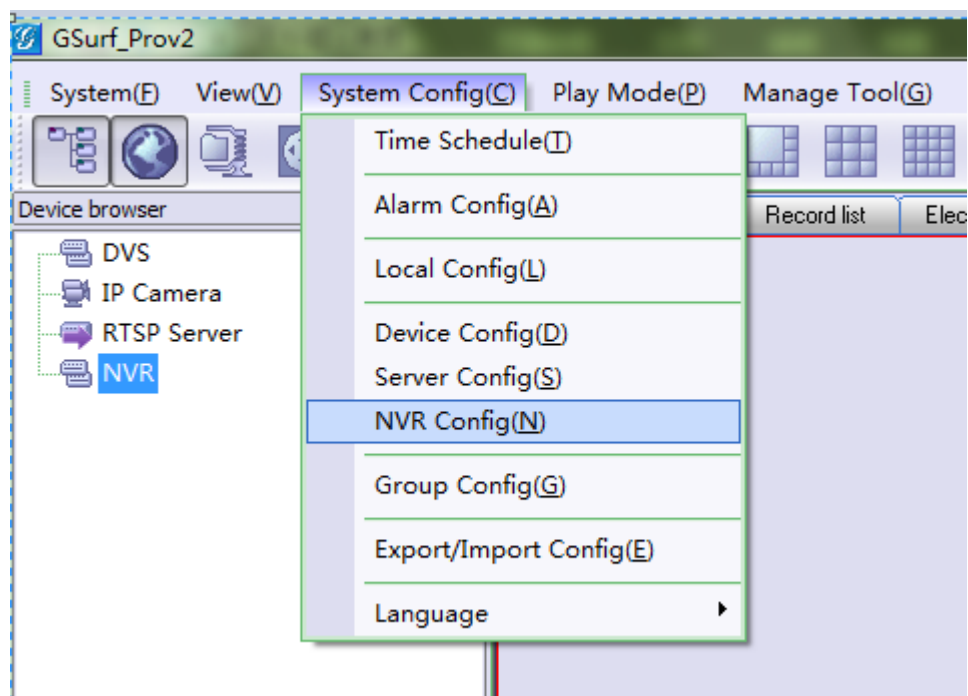


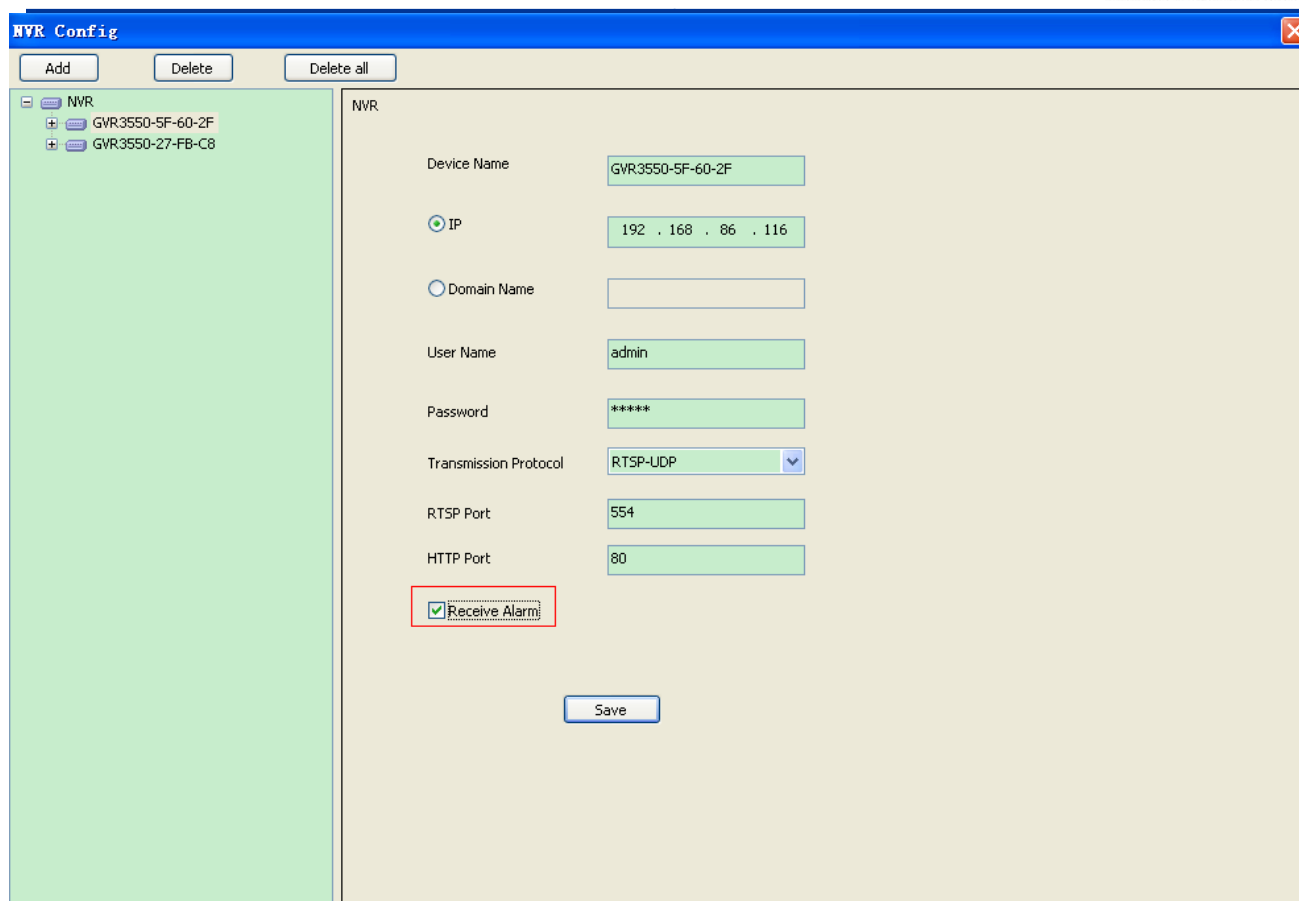
Using mouse “press and hold” the green control bar, the video replay will pause, drawing left and right then release mouse, video will be replayed at specified time position.



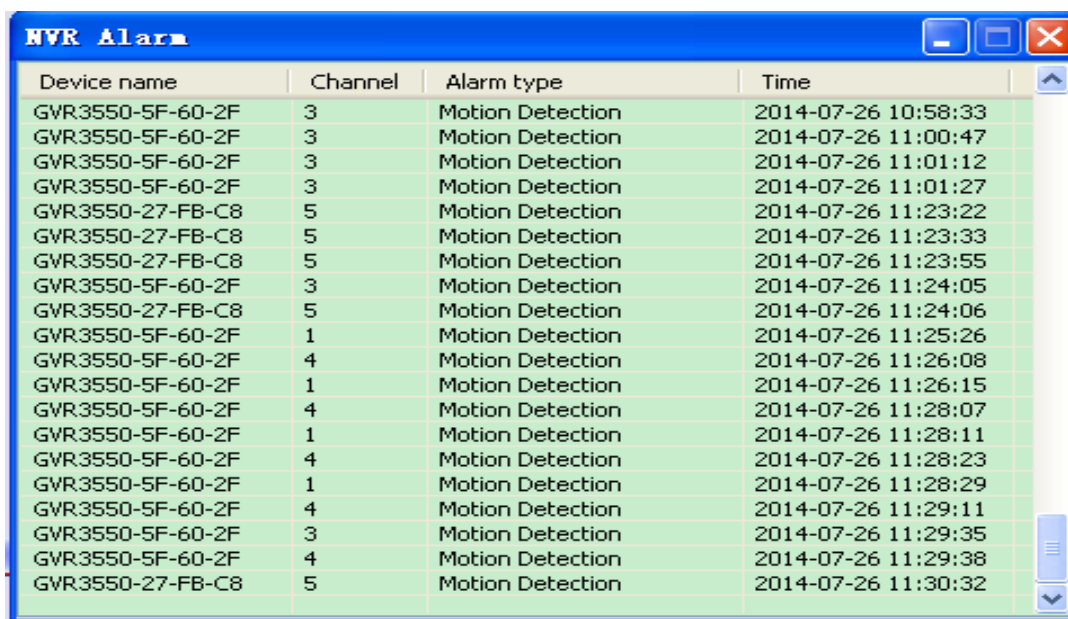
7. Receive alarm notifications from GVR3550 and pop-up a window prompt:

Enable receive alarm: NVR Config->Receive Alarm





The window prompts will pop-up as shown below when alarm notifications received from GVR3550:



Device name	Channel	Alarm type	Time
GVR3550-5F-60-2F	3	Motion Detection	2014-07-26 10:58:33
GVR3550-5F-60-2F	3	Motion Detection	2014-07-26 11:00:47
GVR3550-5F-60-2F	3	Motion Detection	2014-07-26 11:01:12
GVR3550-5F-60-2F	3	Motion Detection	2014-07-26 11:01:27
GVR3550-27-FB-C8	5	Motion Detection	2014-07-26 11:23:22
GVR3550-27-FB-C8	5	Motion Detection	2014-07-26 11:23:33
GVR3550-27-FB-C8	5	Motion Detection	2014-07-26 11:23:55
GVR3550-5F-60-2F	3	Motion Detection	2014-07-26 11:24:05
GVR3550-27-FB-C8	5	Motion Detection	2014-07-26 11:24:06
GVR3550-5F-60-2F	1	Motion Detection	2014-07-26 11:25:26
GVR3550-5F-60-2F	4	Motion Detection	2014-07-26 11:26:08
GVR3550-5F-60-2F	1	Motion Detection	2014-07-26 11:26:15
GVR3550-5F-60-2F	4	Motion Detection	2014-07-26 11:28:07
GVR3550-5F-60-2F	1	Motion Detection	2014-07-26 11:28:11
GVR3550-5F-60-2F	4	Motion Detection	2014-07-26 11:28:23
GVR3550-5F-60-2F	1	Motion Detection	2014-07-26 11:28:29
GVR3550-5F-60-2F	4	Motion Detection	2014-07-26 11:29:11
GVR3550-5F-60-2F	3	Motion Detection	2014-07-26 11:29:35
GVR3550-5F-60-2F	4	Motion Detection	2014-07-26 11:29:38
GVR3550-27-FB-C8	5	Motion Detection	2014-07-26 11:30:32