



Using Motion Detection, Alerts and Alarms

Agenda



- 1. Motion Detection**
 - Features and abilities
 - 3 step setup
- 2. Integrating External Alarm Devices**
- 3. Surveillance Alerts and Alarms**
 - Where/when alerts can be sent
 - Setting up alerts and alarms
 - Event-triggered recording
- 4. GSurf Pro V2 – Grandstream FREE VMS**

Indoor/Outdoor Cameras



GXV3662
Series



GXV3672
Series



GXV3610 series



GXV3674_VF
Series

Indoor Cameras



GXV3601_HD



GXV3651_FHD

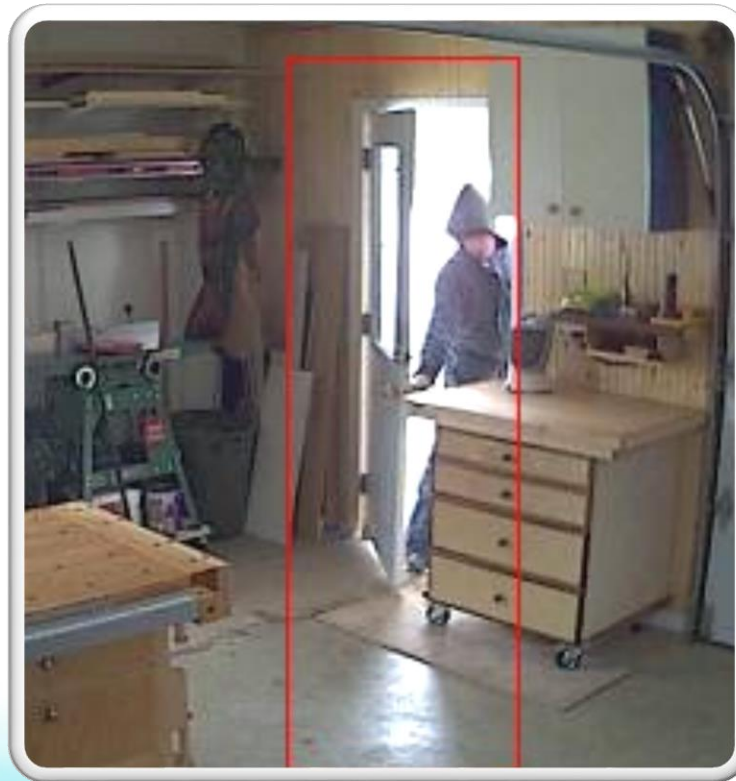


GXV3615WP_HD



GXV3611_HD

1. Motion Detection



Motion Detection



- Available on all Grandstream cameras
- Up to 16 target areas per camera
- Easily setup in 3 steps using a camera's Web UI
- Grandstream's ONVIF-compliance will allow motion detection on our camera to interact with any ONVIF VMS, NVR, etc.



Enterprise



Small Business


3-Step Process

Step1: Enable Motion detection and setup regions

Motion Detection Settings

Motion detection will be disabled if both primary and secondary codec are set to MJPEG

Show Regions
 Enable Motion Detection



Region ID	Sensitivity
0	50
1	50
2	50
3	50
4	50
5	50
6	50
7	50
8	50
9	50
10	50
11	50
12	50
13	50
14	50
15	50

Save

*Sensitivity
can be
adjusted*

Step2: Set Alarm Action

Alarm Action

Record Video From Pre Alarm Up to seconds to After Alarm Up to seconds ⓘ

Voice Alarm to SIP Phone

Upload to Alarm Center

Upload to Alarm HTTP Server

Record Video and Upload to FTP Server

Email and FTP upload JPEG

Note: When **Upload to Alarm Center** is checked, the Motion Detection region and icon (in Home page) will blink in red if your camera detects any motion.

Alarm Action is where you tell the camera what to do when it senses an alarm (where to send the alert to and how to alert you)

Step3: Setup Motion detection Time Schedule

Motion Detection Time Schedule


Region ID	Date	Start Time	End Time	
<input type="text" value="0"/>	<input type="text" value="Everyday"/>	<input type="text" value="00:00"/>	<input type="text" value="23:59"/>	<input type="button" value="Add"/>

Important Settings

Motion Detection Settings

Motion detection will be disabled if both primary and secondary codec are set to MJPEG

Show Regions
 Enable Motion Detection



Region ID	Sensitivity
0	50
1	50
2	50
3	50
4	50
5	50
6	50
7	50
8	50
9	50
10	50
11	50
12	50
13	50
14	50
15	50

Auto Minimum duration required by motion detection trigger(s)
3 Minimum interval of different motion detection event(s)

- **Sensitivity**
- **Minimum duration required by motion detection trigger**
- **Minimum interval of different motion detection event**
- **Time Schedule Config**
- **Alarm Action** (what should the camera do when motion is detected)
 - *Record Video*
 - *Voice Alarm to SIP phone*
 - *Upload to Alarm Center (Gsurf_Pro V2)*
 - *Upload to Alarm HTTP (3rd party Application/VMS)*
 - *Upload to FTP*
 - *Email and FTP screenshots*

Set Up Alarm Actions...

Alarm Action

- Record Video From Pre Alarm Up to seconds to After Alarm Up to seconds ⓘ
- Voice Alarm to SIP Phone
- Upload to Alarm Center
- Upload to Alarm HTTP Server
- Record Video and Upload to FTP Server
- Email and FTP upload JPEG

Pre Alarm Up to seconds to After Alarm Up to seconds

Alarm Action is where you tell the camera what to do when it senses an alarm (where to send the alert to and how to alert you)

Pre Alarm Up to seconds to After Alarm Up to seconds



10 Minute Motion Detection Demonstration



<https://www.youtube.com/watch?v=X9-VGzcVytw>

2. Integrating With External Alarms, Speakers and Intercoms



Integrating With External Alarms, Speakers and Intercoms

1. Alarm devices input directly into cameras
2. Alarm devices input to encoders/decoders
3. Alarm devices input to PC-server for integration with Gsurf_Pro



2.1 Integrating External Devices with Cameras



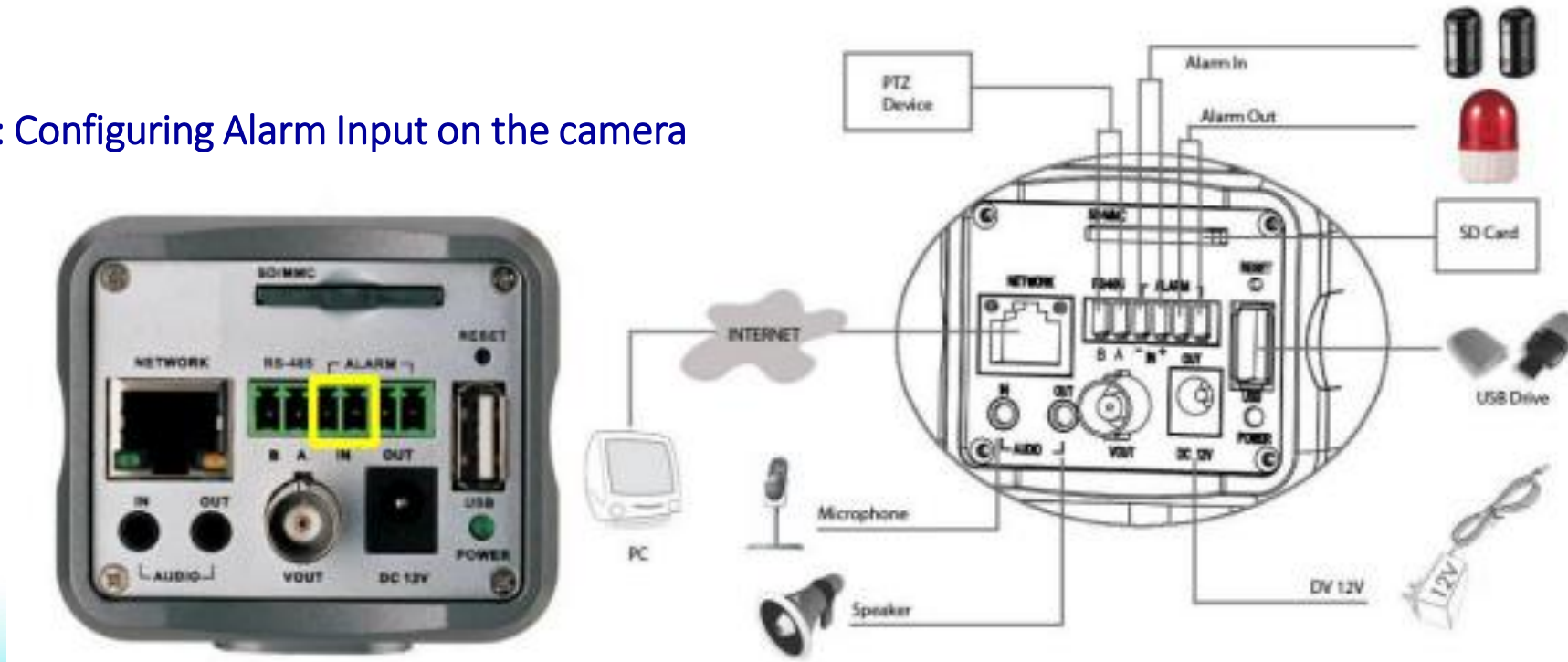
Alarm & Audio Input/Output	Audio Input Only
GXV3662 series	GXV3674 series
GXV3651_FHD	GXV3672 series
GXV3611_HD	GXV3610 series
GXV3601_HD	

2.1 Integrating External Audio Devices with Cameras



2.1 Integrating External Devices with Cameras

Step1: Configuring Alarm Input on the camera



2.1 Integrating External Devices with Cameras

Step2: Enable Alert Event

Configuration > Advanced Settings > Alarm Event

DI Alarm Action

- Record Video From Pre Alarm Up to seconds to After Alarm Up to seconds ⓘ
 - Voice Alarm to SIP Phone
 - Alarm Output
 - Upload to Alarm Center
 - Upload to Alarm HTTP Server
 - Email and FTP upload JPEG and Store it to USB card or SD driver
- Pre Alarm Up to seconds to After Alarm Up to seconds

Step3: Configure Alarm Schedule

Configuration > Advanced Settings > Alert Event

Alarm Event Time Schedule

Date	Start Time	End Time	
Everyday <input type="text"/>	<input type="text" value="00:00"/>	<input type="text" value="23:59"/>	<input type="button" value="Add"/>

- In this scenario, when Alarm IN triggers an alarm, a SIP call will be sent to preconfigured SIP phone number.*

2.2 Integrating External Devices with Encoders/Decoders



GXV3500



GXV3504

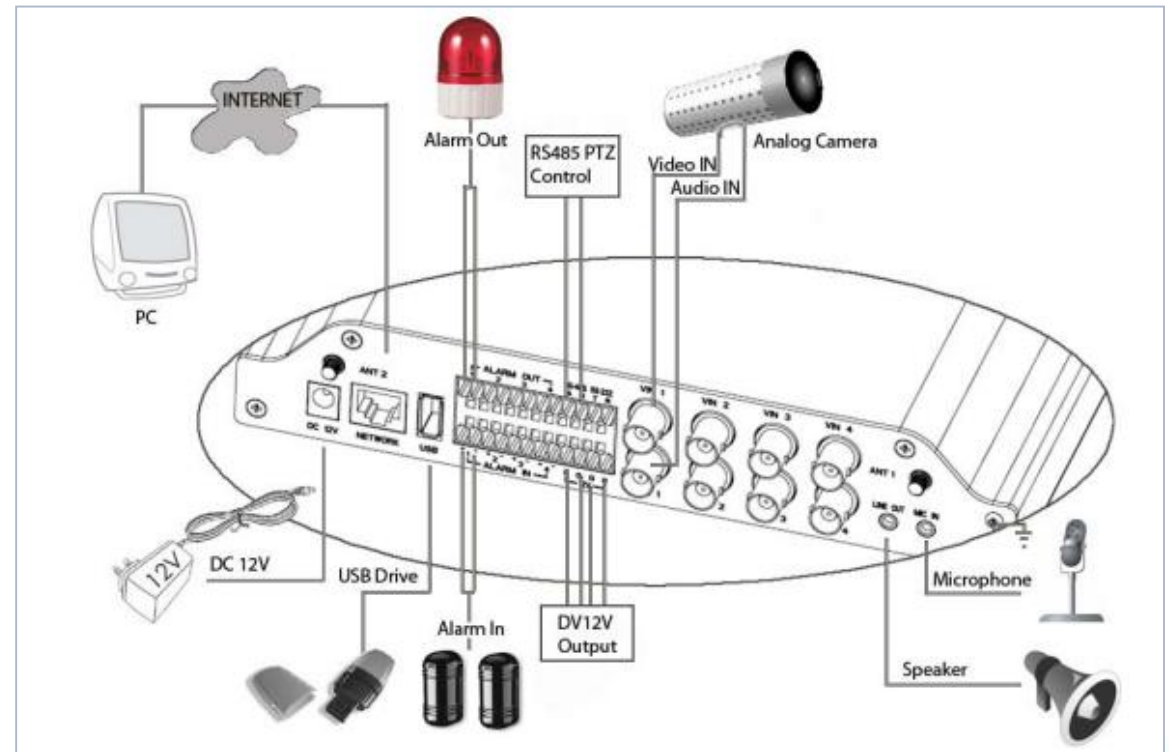
2.2 Integrating External Devices with Encoders/Decoders



GXV3500

2. Integrating External Devices with Encoders/Decoders

- **Grandstream's encoders/decoders support integration of 3rd party devices**
- A video encoder digitizes analog video signals and sends digital images directly over an IP network
- It turns an analog video system into a IP network video system and enables users to view live images using a web browser or a video management software such as Gsurf_Pro or other VMS or smartphone applications on any local or remote computer devices.
- Allows authorized viewers from different locations to simultaneously access images from the same analog camera.



GXV3504

2. Integrating External Devices with Encoders/Decoders

Using encoder or decoders Web UI

Step2: Enable Alert Event

Configuration > Advanced Settings > Alert Event

Alarm Action

- Record Video From Pre Alarm seconds to After Alarm seconds ⓘ
- Voice Alarm to SIP Phone
- Alarm Output
- Upload to Alarm Center
- Upload to Alarm HTTP Server
- Email and FTP upload JPEG and Store it to SD driver

Step3: Configure Alarm Schedule

Configuration > Advanced Settings > Alert Event

Alarm Event Time Schedule

Date	Start Time	End Time	
Everyday ▾	<input type="text" value="00:00"/>	<input type="text" value="23:59"/>	<input type="button" value="Add"/>



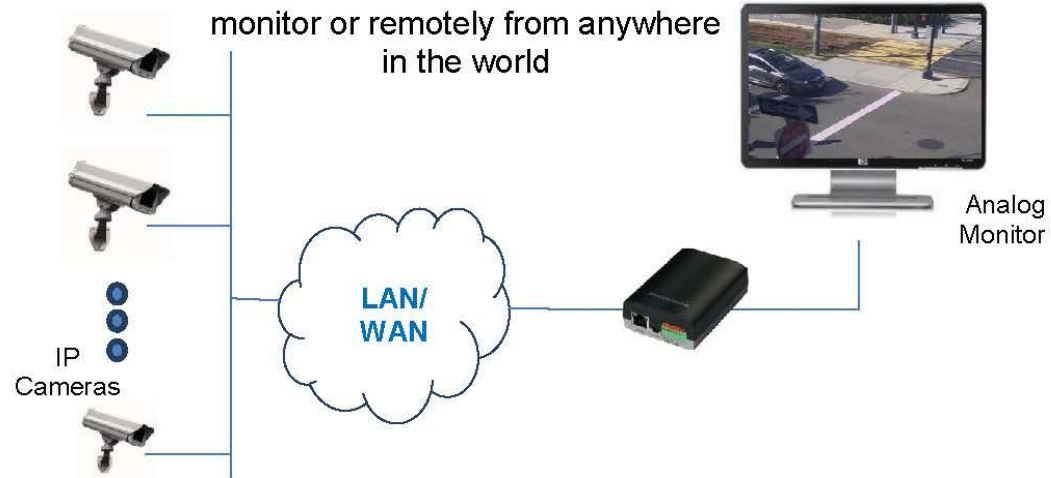
GXV3500
3-in-1
IP Video Decoder +
Encoder +
Public Address System (PAS)
combo device



- GXV3500**
- Advanced multi-streaming-rate real-time H.264, Motion JPEG at D1 resolution
 - Built-in high-performance serve to allow 10+ simultaneous viewers
 - SIP/VoIP support for two-way audio and video streaming to mobile/video phones
 - Integrated Power-over-Ethernet (802.af)

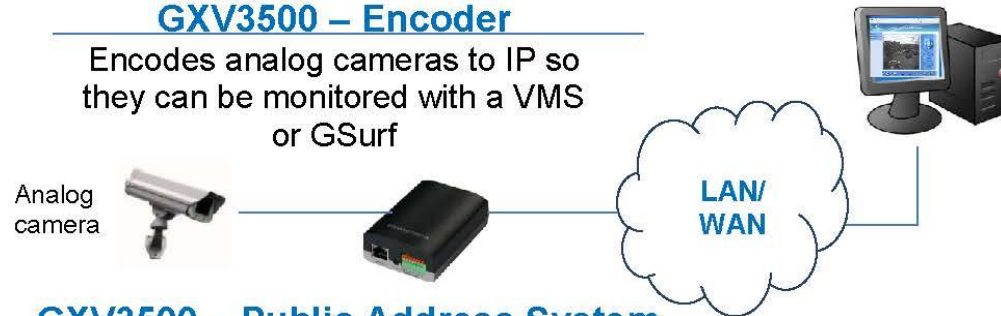
GXV3500 – Decoder

View 1 to 8 cameras on a video monitor or remotely from anywhere in the world



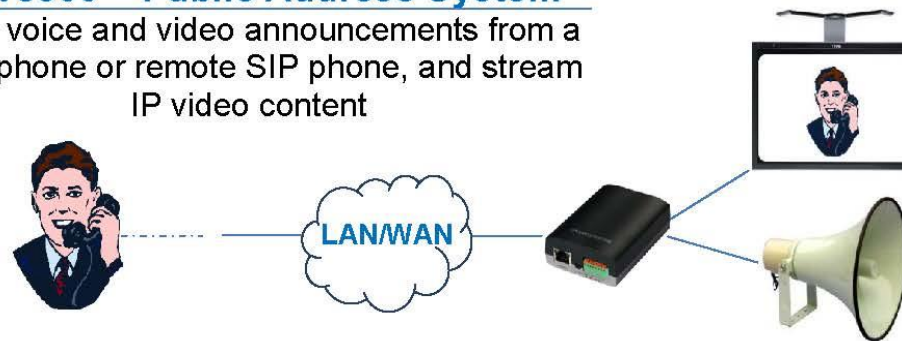
GXV3500 – Encoder

Encodes analog cameras to IP so they can be monitored with a VMS or GSurf

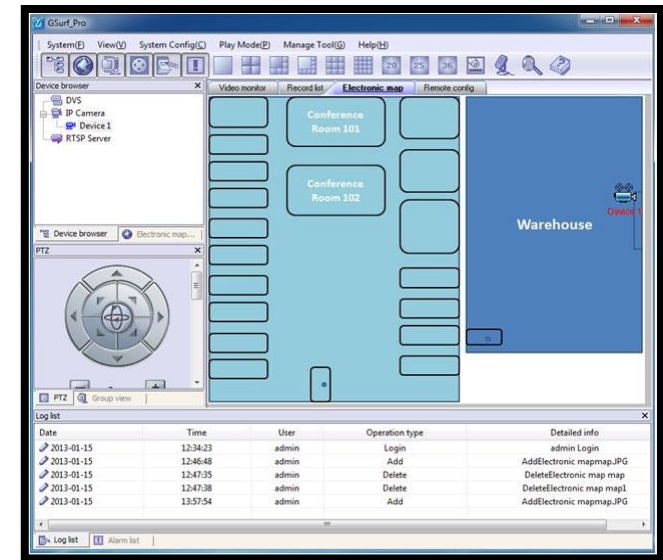
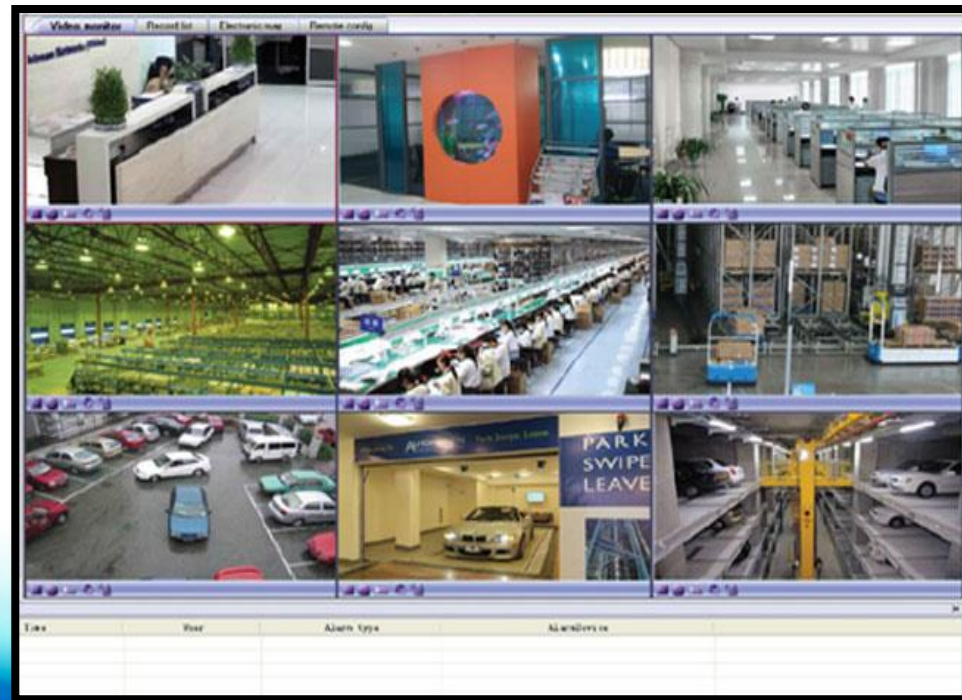
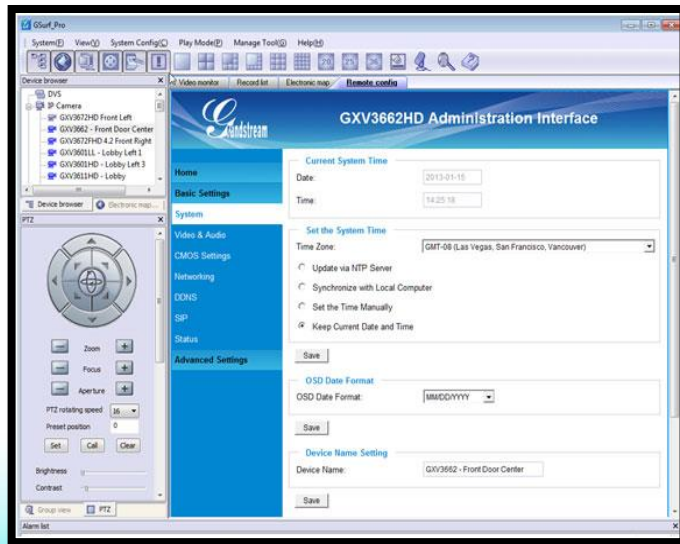


GXV3500 – Public Address System

Make voice and video announcements from a microphone or remote SIP phone, and stream IP video content



2.3. Integrate External Devices with PC running Gsurf_Pro



3. Using Alerts and Alarms



Event-Triggered Recording



Starts Recording when motion detection or another alarm event is triggered

Receiving Alerts

1. Gsurf_Pro/GVR3550 Live View

*When an alarm is triggered,
the Live View will notify user
using pop-up on-screen*



2. Video Call to video devices



3. Voice Call Alerts



4. Email Screenshot *When a new object is detected by the camera*



Set Up Alarm Actions...

Alarm Action

Record Video From Pre Alarm Up to seconds to After Alarm Up to seconds ⓘ

Voice Alarm to SIP Phone

Choose this option to have video call made to video phone. If the phone being called is SIP video enabled, the call will go through as a video call

Upload to Alarm Center

Upload to Alarm HTTP Server

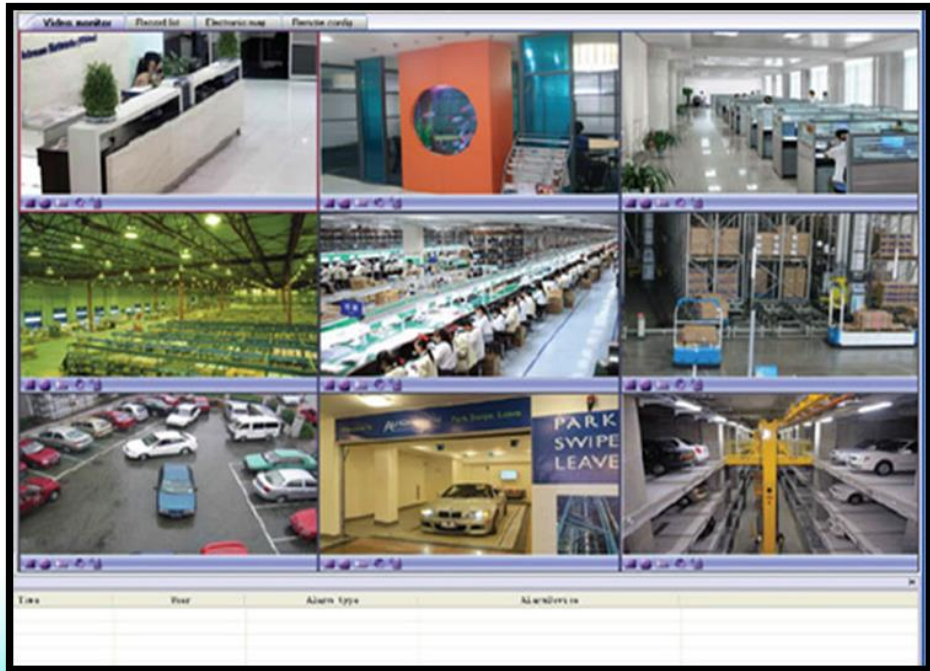
Record Video and Upload to FTP Server

Email and FTP upload JPEG


Pre Alarm Up to seconds to After Alarm Up to seconds

Alarm Action is where you tell the camera what to do when it senses an alarm (where to send the alert to and how to alert you)

Alerts to Gsurf_Pro V2



Alarm Action

- Record Video From Pre Alarm Up to seconds to After Alarm Up to seconds ⓘ
- Voice Alarm to SIP Phone
- Upload to Alarm Center 
- Upload to Alarm HTTP Server
- Record Video and Upload to FTP Server
- Email and FTP upload JPEG

Pre Alarm Up to seconds to After Alarm Up to seconds


Pre Alarm Up to seconds to After Alarm Up to seconds

Voice/Video Alerts to SIP Phone

Alarm Action

- Record Video From Pre Alarm Up
- Voice Alarm to SIP Phone
- Upload to Alarm Center
- Upload to Alarm HTTP Server
- Record Video and Upload to FTP S
- Email and FTP upload JPEG

Pre Alarm Up to seconds to A

 GXV3610_H

Home

Basic Settings

System

Video & Audio

OSD

CMOS Settings

Networking

DDNS

SIP

Status

Advanced Settings

General Phone Settings

Registered:

Unregister On Reboot:

SIP Settings

Account Name:

SIP Server:

Outbound Proxy:

SIP User ID:

Authenticate ID:

TEL URI:

Authenticate Password:

Phone List

Phone Number	Remark Name	Remove
<input type="text"/>	<input type="text"/>	<input type="button" value="Add..."/>

White List

Phone Number	Remove
<input type="text"/>	<input type="button" value="Add..."/>

Set Up Alarm Actions...

Alarm Action

Record Video From Pre Alarm Up to seconds to After Alarm Up to seconds ⓘ

Voice Alarm to SIP Phone

Choose this option to have video call made to video phone. If the phone being called is SIP video enabled, the call will go through as a video call

Upload to Alarm Center

Upload to Alarm HTTP Server

Record Video and Upload to FTP Server

Email and FTP upload JPEG

Pre Alarm Up to seconds to After Alarm Up to seconds

Screenshot Alerts to Email



Alarm Action

- Record Video From Pre Alarm Up to
- Voice Alarm to SIP Phone
- Upload to Alarm Center
- Upload to Alarm HTTP Server
- Record Video and Upload to FTP S
- Email and FTP upload JPEG

Pre Alarm Up to seconds to A



Grandstream GXV3610_HD Administration Interface

- Home
- Basic Settings
- Advanced Settings**
- User Management
- Maintenance
- SMTP**
- FTP
- Privacy Masks
- Alarm Server
- Time Lapse Photography
- Motion Detection
- Syslog

SMTP Server Settings

Enable SMTP:

SMTP Server:

SMTP Server Port:

From E-Mail address:

To E-Mail address 1:

To E-Mail address 2:

To E-Mail address 3:

User Name:

Password:

SSL:

Email Subject:

Email Content:

1 Required Fields.
2 Valid DNS server is required for hostname.

Save Test


Upload Video/Picture to FTP

Alarm Action

- Record Video From Pre Alarm Up to
- Voice Alarm to SIP Phone
- Upload to Alarm Center
- Upload to Alarm HTTP Server
- Record Video and Upload to FTP Server
- Email and FTP upload JPEG

Pre Alarm Up to seconds to Alarm



 **GXV3610_HD Administration Interface**

- Home
- Basic Settings
- Advanced Settings**
- User Management
- Maintenance
- SMTP
- FTP**
- Privacy Masks
- Alarm Server
- Time Lapse Photography
- Motion Detection
- Syslog

FTP Settings

Enable FTP:

FTP Server:

FTP Server Port:

User Name:

Password: ⓘ

Path:

Valid DNS server is required for hostname.

Save Test

Upload to HTTP

Alarm Action

- Record Video From Pre Alarm Up to
- Voice Alarm to SIP Phone
- Upload to Alarm Center
- Upload to Alarm HTTP Server
- Record Video and Upload to FTP S
- Email and FTP upload JPEG

Pre Alarm Up to seconds to A

 **GXV3610_HD Administration Interface**

- Home
- Basic Settings
- Advanced Settings**
- User Management
- Maintenance
- SMTp
- FTP
- Privacy Masks
- Alarm Server**
- Time Lapse Photography
- Motion Detection
- Syslog

Alarm HTTP Server Settings

Server Name:

URL:

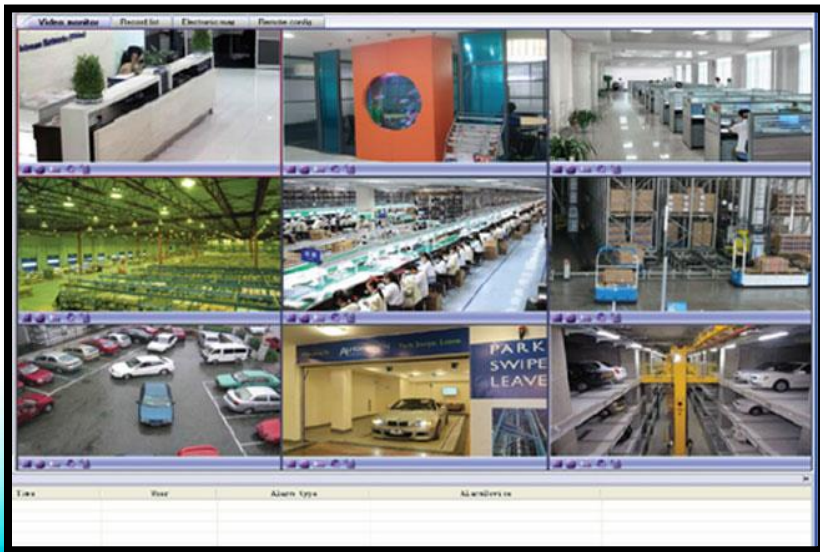
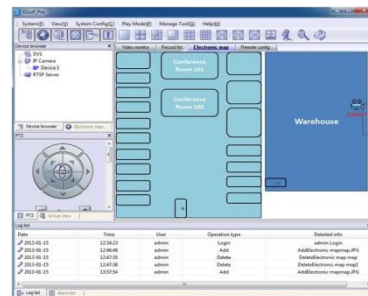
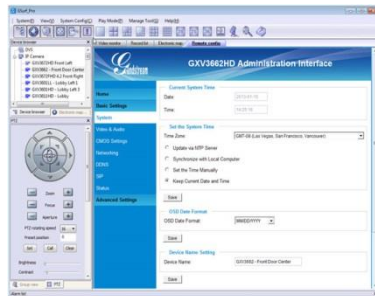
User Name:

Password:

Save

Gsurf_Pro V2

Video Management Software



- Monitor up to 72 cameras
- Client/Server architecture with e-Map support
- Two-way audio/video monitoring and alarming
- Replay up to 4 recorded video files simultaneously
- Zero recurring costs or licensing fees – (Gsurf_Pro is included with all Grandstream surveillance products)
- Installed on one or several PC-based server(s)

Make it a Solution...

Register Grandstream's SIP cameras to an IP PBX

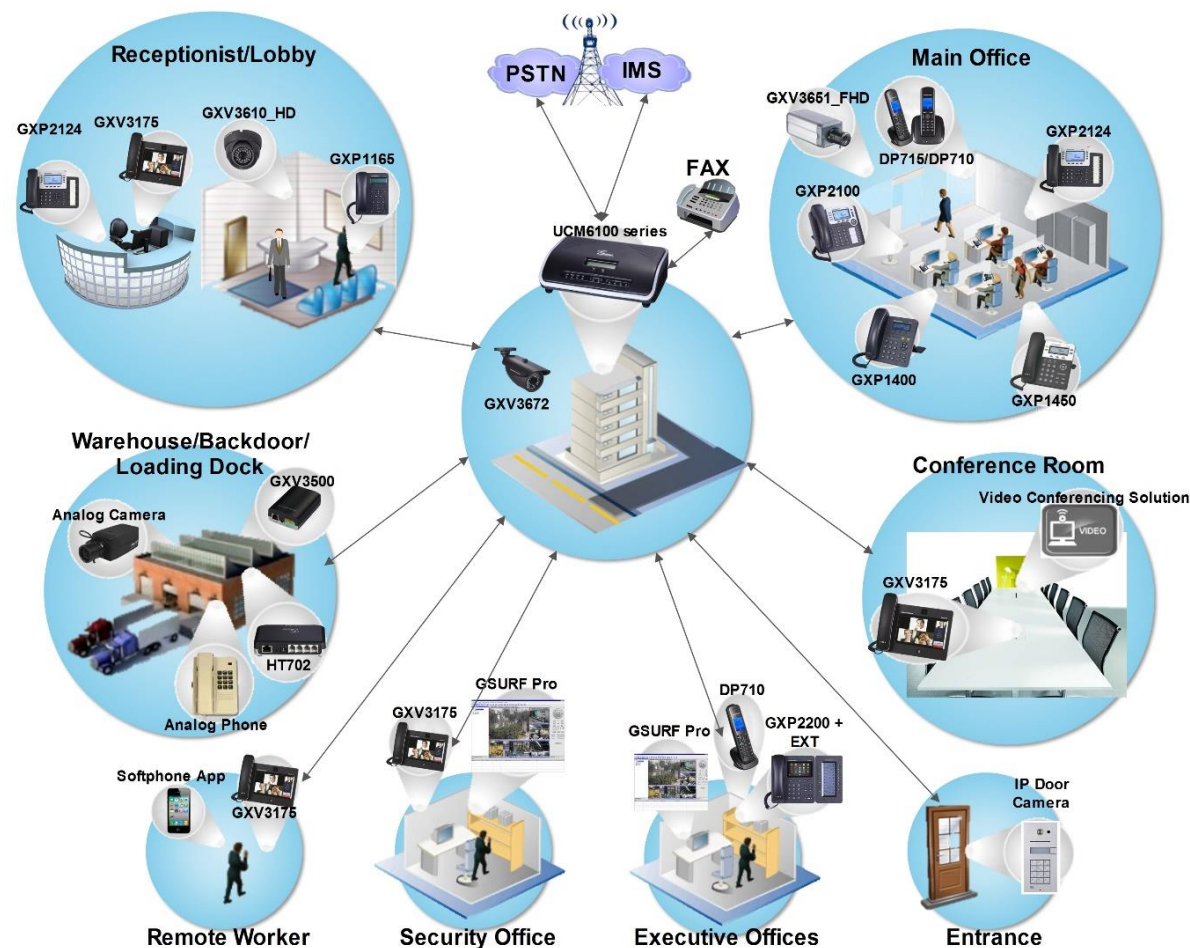


- Make video calls to IP cameras to see live feeds
- Set cameras to call video device (IP Video phones) when alert/alarm is triggered
- Cameras can send you an email or screen capture
- To communicate with IP Door Cameras, etc.
- 2-way video/audio calls to/from cameras thanks to SIP/VoIP support
 - *GXV3601 series, GXV3610 series, GXV3611_HD and GXV3615 series feature built-in microphone and speaker*



Unified Communications: One Integrated Network Solution

- ◆ All Grandstream phone, cameras, and UCM6100 series are SIP-based devices
- ◆ A true Unified Communications solution offering voice, video, data and mobility features
- ◆ All devices can be easily setup, customized and managed from one central location
- ◆ Add functionality to devices by combining them onto the same network
- ◆ Even add/include analog phones and analog cameras





Using Motion Detection, Alerts and Alarms